

# TYPE A 1 BUILDING 1

APARTMENT NUMBER



1 BATH



1 BED



OPEN PLAN

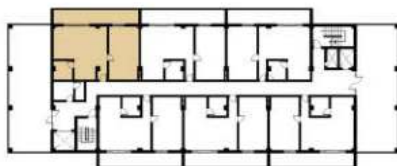


1 CARPARK

UNIT 1 | UNIT 15 | UNIT 34



MASTER BEDROOM	30.45 SQM
BATHROOM	7.25 SQM
LIVING/DINING/KITCHEN	44.80 SQM
VERANDA	22.75 SQM
<b>TOTAL AREA</b>	<b>105.25 SQM</b>



Occurs  
Level 2, 4, 7

Furnishings are for illustrative purposes only and are not included in the unit. This plan is not to scale. Please note that the information contained in the brochure including the floor plan contained within it, was prepared prior to completion of construction and may be subjected to change without prior notice before the completion of the project. The finished construction may be materially different from the depicted in this brochure. This material and all design is copyright and is the property of Waterview Station Investments Pty. Ltd. This material must not be used, reproduced or copied wholly or in part without prior written permission of Waterview Station Investments Pty. Ltd. These plans were prepared on 2023 but design, dimensions, specifications and materials are indicative only and are subject to change without notice at anytime and intending purchasers should undertake their own independent inquiries to satisfy themselves regarding the status of these plans. You should refer to appropriate Survey Plans for confirmation of individual unit areas.



WATERVIEW STATION  
INVESTMENTS PTY. LTD



Lot 1 Knowles Road, Coolbie,  
Qld, Australia 4850

**WATERVIEW**  
RETIREMENT VILLAGE

# TYPE A2 BUILDING 1

APARTMENT NUMBER



1 BATH



1 BED



OPEN PLAN

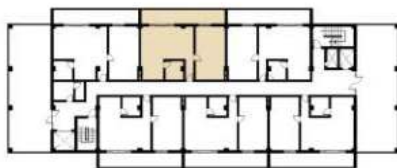


1 CARPARK

UNIT 2 | UNIT 16 | UNIT 35



MASTER BEDROOM	29.20 SQM
BATHROOM	7.00 SQM
LIVING/DINING/KITCHEN	44.00 SQM
VERANDA	22.00 SQM
<hr/>	
TOTAL AREA	102.20 SQM



Occurs  
Level 2, 4, 7

Furnishings are for illustrative purposes only and are not included in the unit. This plan is not to scale. Please note that the information contained in the brochure including the floor plan contained within it, was prepared prior to completion of construction and may be subjected to change without prior notice before the completion of the project. The finished construction may be materially different from the depicted in this brochure. This material and all design is copyright and is the property of Waterview Station Investments Pty. Ltd. This material must not be used, reproduced or copied wholly or in part without prior written permission of Waterview Station Investments Pty. Ltd. These plans were prepared on 2023 but design, dimensions, specifications and materials are indicative only and are subject to change without notice at anytime and intending purchasers should undertake their own independent inquiries to satisfy themselves regarding the status of these plans. You should refer to appropriate Survey Plans for confirmation of individual unit areas.



WATERVIEW STATION  
INVESTMENTS PTY. LTD



Lot 1 Knowles Road, Coolbie,  
Old, Australia 4850

**WATERVIEW**  
RETIREMENT VILLAGE

# TYPE A3 BUILDING 1

APARTMENT NUMBER



1 BATH



1 BED



OPEN PLAN

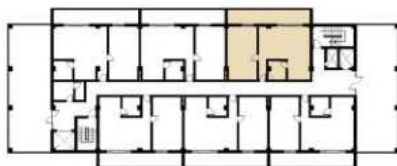


1 CARPARK

UNIT 3 | UNIT 17 | UNIT 36



MASTER BEDROOM	29.20 SQM
BATHROOM	7.00 SQM
LIVING/DINING/KITCHEN	44.00 SQM
VERANDA	22.00 SQM
<hr/>	
TOTAL AREA	102.20 SQM



Occurs  
Level 2, 4, 7

Furnishings are for illustrative purposes only and are not included in the unit. This plan is not to scale. Please note that the information contained in the brochure including the floor plan contained within it, was prepared prior to completion of construction and may be subjected to change without prior notice before the completion of the project. The finished construction may be materially different from the depicted in this brochure. This material and all design is copyright and is the property of Waterview Station Investments Pty. Ltd. This material must not be used, reproduced or copied wholly or in part without prior written permission of Waterview Station Investments Pty. Ltd. These plans were prepared on 2023 but design, dimensions, specifications and materials are indicative only and are subject to change without notice at anytime and intending purchasers should undertake their own independent inquiries to satisfy themselves regarding the status of these plans. You should refer to appropriate Survey Plans for confirmation of individual unit areas.



WATERVIEW STATION  
INVESTMENTS PTY. LTD



Lot 1 Knowles Road, Coolbidge,  
Qld, Australia 4850

**WATERVIEW**  
RETIREMENT VILLAGE

# TYPE A4 BUILDING 1

APARTMENT NUMBER



1 BATH



1 BED



OPEN PLAN

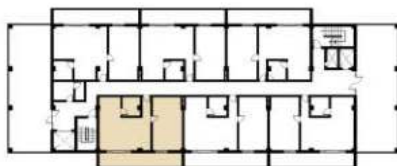


1 CARPARK

UNIT 4 | UNIT 19 | UNIT 38



MASTER BEDROOM	29.20 SQM
BATHROOM	7.00 SQM
LIVING/DINING/KITCHEN	44.00 SQM
VERANDA	22.00 SQM
<b>TOTAL AREA</b>	<b>102.20 SQM</b>



Occurs  
Level 2, 4, 7

Furnishings are for illustrative purposes only and are not included in the unit. This plan is not to scale. Please note that the information contained in the brochure including the floor plan contained within it, was prepared prior to completion of construction and may be subjected to change without prior notice before the completion of the project. The finished construction may be materially different from the depicted in this brochure. This material and all design is copyright and is the property of Waterview Station Investments Pty. Ltd. This material must not be used, reproduced or copied wholly or in part without prior written permission of Waterview Station Investments Pty. Ltd. These plans were prepared on 2023 but design, dimensions, specifications and materials are indicative only and are subject to change without notice at anytime and intending purchasers should undertake their own independent inquiries to satisfy themselves regarding the status of these plans. You should refer to appropriate Survey Plans for confirmation of individual unit areas.



WATERVIEW STATION  
INVESTMENTS PTY. LTD



Lot 1 Knowles Road, Coolibie,  
Old, Australia 4850

**WATERVIEW**  
RETIREMENT VILLAGE

# TYPE A5 BUILDING 1

APARTMENT NUMBER



1 BATH



1 BED



OPEN PLAN

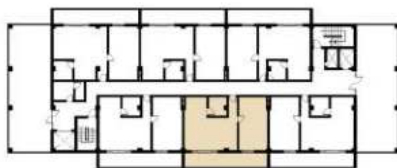


1 CARPARK

UNIT 5 | UNIT 18 | UNIT 37



MASTER BEDROOM	29.20 SQM
BATHROOM	7.00 SQM
LIVING/DINING/KITCHEN	44.00 SQM
VERANDA	22.00 SQM
<b>TOTAL AREA</b>	<b>102.20 SQM</b>



Occurs  
Level 2, 4, 7

Furnishings are for illustrative purposes only and are not included in the unit. This plan is not to scale. Please note that the information contained in the brochure including the floor plan contained within it, was prepared prior to completion of construction and may be subjected to change without prior notice before the completion of the project. The finished construction may be materially different from the depicted in this brochure. This material and all design is copyright and is the property of Waterview Station Investments Pty. Ltd. This material must not be used, reproduced or copied wholly or in part without prior written permission of Waterview Station Investments Pty. Ltd. These plans were prepared on 2023 but design, dimensions, specifications and materials are indicative only and are subject to change without notice at anytime and intending purchasers should undertake their own independent inquiries to satisfy themselves regarding the status of these plans. You should refer to appropriate Survey Plans for confirmation of individual unit areas.



WATERVIEW STATION  
INVESTMENTS PTY. LTD



Lot 1 Knowles Road, Coolbie,  
Qld, Australia 4850

**WATERVIEW**  
RETIREMENT VILLAGE

# TYPE A6 BUILDING 1

APARTMENT NUMBER



1 BATH



1 BED



OPEN PLAN

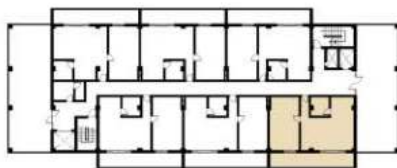


1 CARPARK

## UNIT 6



MASTER BEDROOM	29.20 SQM
BATHROOM	7.00 SQM
LIVING/DINING/KITCHEN	44.80 SQM
VERANDA	22.20 SQM
<hr/>	
TOTAL AREA	103.25 SQM



Occurs  
Level 2, 4, 7

Furnishings are for illustrative purposes only and are not included in the unit. This plan is not to scale. Please note that the information contained in the brochure including the floor plan contained within it, was prepared prior to completion of construction and may be subjected to change without prior notice before the completion of the project. The finished construction may be materially different from the depicted in this brochure. This material and all design is copyright and is the property of Waterview Station Investments Pty. Ltd. This material must not be used, reproduced or copied wholly or in part without prior written permission of Waterview Station Investments Pty. Ltd. These plans were prepared on 2023 but design, dimensions, specifications and materials are indicative only and are subject to change without notice at anytime and intending purchasers should undertake their own independent inquiries to satisfy themselves regarding the status of these plans. You should refer to appropriate Survey Plans for confirmation of individual unit areas.



WATERVIEW STATION  
INVESTMENTS PTY. LTD



Lot 1 Knowles Road, Coolbie,  
Qld, Australia 4850

WATERVIEW  
RETIREMENT VILLAGE

# TYPE A7 BUILDING 1

APARTMENT NUMBER



1 BATH



1 BED



OPEN PLAN

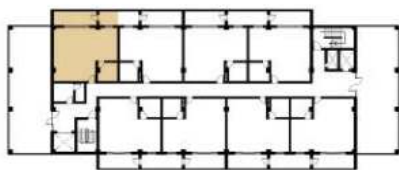


1 CARPARK

UNIT 7 | UNIT 26



BED AREA	11.50 SQM
BATHROOM	7.70 SQM
LIVING/DINING/KITCHEN	43.50 SQM
VERANDA	17.25 SQM
<hr/>	
TOTAL AREA	79.95 SQM



Occurs  
Level 3 & 6

Furnishings are for illustrative purposes only and are not included in the unit. This plan is not to scale. Please note that the information contained in the brochure including the floor plan contained within it, was prepared prior to completion of construction and may be subjected to change without prior notice before the completion of the project. The finished construction may be materially different from the depicted in this brochure. This material and all design is copyright and is the property of Waterview Station Investments Pty. Ltd. This material must not be used, reproduced or copied wholly or in part without prior written permission of Waterview Station Investments Pty. Ltd. These plans were prepared on 2023 but design, dimensions, specifications and materials are indicative only and are subject to change without notice at anytime and intending purchasers should undertake their own independent inquiries to satisfy themselves regarding the status of these plans. You should refer to appropriate Survey Plans for confirmation of individual unit areas.



WATERVIEW STATION  
INVESTMENTS PTY. LTD



Lot 1 Knowles Road, Coolbidge,  
Qld, Australia 4850

**WATERVIEW**  
RETIREMENT VILLAGE

# TYPE A8 BUILDING 1

APARTMENT NUMBER



1 BATH



1 BED



OPEN PLAN

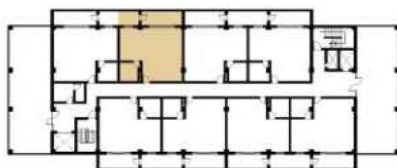


1 CARPARK

UNIT 8 | UNIT 27



BED AREA	10.50 SQM
BATHROOM	7.70 SQM
LIVING/DINING/KITCHEN	41.60 SQM
VERANDA	16.50 SQM
<hr/>	
TOTAL AREA	76.30 SQM



Occurs  
Level 3 & 6

Furnishings are for illustrative purposes only and are not included in the unit. This plan is not to scale. Please note that the information contained in the brochure including the floor plan contained within it, was prepared prior to completion of construction and may be subjected to change without prior notice before the completion of the project. The finished construction may be materially different from the depicted in this brochure. This material and all design is copyright and is the property of Waterview Station Investments Pty. Ltd. This material must not be used, reproduced or copied wholly or in part without prior written permission of Waterview Station Investments Pty. Ltd. These plans were prepared on 2023 but design, dimensions, specifications and materials are indicative only and are subject to change without notice at anytime and intending purchasers should undertake their own independent inquiries to satisfy themselves regarding the status of these plans. You should refer to appropriate Survey Plans for confirmation of individual unit areas.



WATERVIEW STATION  
INVESTMENTS PTY. LTD



Lot 1 Knowles Road, Coolbie,  
Qld, Australia 4850

**WATERVIEW**  
RETIREMENT VILLAGE



# TYPE A9 BUILDING 1

APARTMENT NUMBER



1 BATH



1 BED



OPEN PLAN

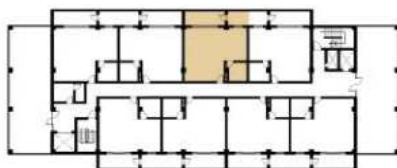


1 CARPARK

UNIT 9 | UNIT 28



BED AREA	10.50 SQM
BATHROOM	7.70 SQM
LIVING/DINING/KITCHEN	41.60 SQM
VERANDA	16.50 SQM
<hr/>	
TOTAL AREA	76.30 SQM



Occurs  
Level 3 & 6

Furnishings are for illustrative purposes only and are not included in the unit. This plan is not to scale. Please note that the information contained in the brochure including the floor plan contained within it, was prepared prior to completion of construction and may be subjected to change without prior notice before the completion of the project. The finished construction may be materially different from the depicted in this brochure. This material and all design is copyright and is the property of Waterview Station Investments Pty. Ltd. This material must not be used, reproduced or copied wholly or in part without prior written permission of Waterview Station Investments Pty. Ltd. These plans were prepared on 2023 but design, dimensions, specifications and materials are indicative only and are subject to change without notice at anytime and intending purchasers should undertake their own independent inquiries to satisfy themselves regarding the status of these plans. You should refer to appropriate Survey Plans for confirmation of individual unit areas.



WATERVIEW STATION  
INVESTMENTS PTY. LTD



Lot 1 Knowles Road, Coolbidge,  
Qld, Australia 4850

**WATERVIEW**  
RETIREMENT VILLAGE

# TYPE A10 BUILDING 1

APARTMENT NUMBER



1 BATH



1 BED



OPEN PLAN

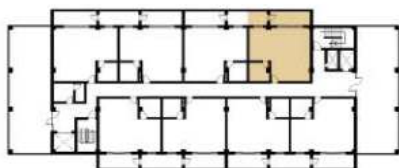


1 CARPARK

UNIT 10 | UNIT 29



BED AREA	10.50 SQM
BATHROOM	7.70 SQM
LIVING/DINING/KITCHEN	41.60 SQM
VERANDA	16.50 SQM
<hr/>	
TOTAL AREA	76.30 SQM



Occurs  
Level 3 & 6

Furnishings are for illustrative purposes only and are not included in the unit. This plan is not to scale. Please note that the information contained in the brochure including the floor plan contained within it, was prepared prior to completion of construction and may be subjected to change without prior notice before the completion of the project. The finished construction may be materially different from the depicted in this brochure. This material and all design is copyright and is the property of Waterview Station Investments Pty. Ltd. This material must not be used, reproduced or copied wholly or in part without prior written permission of Waterview Station Investments Pty. Ltd. These plans were prepared on 2023 but design, dimensions, specifications and materials are indicative only and are subject to change without notice at anytime and intending purchasers should undertake their own independent inquiries to satisfy themselves regarding the status of these plans. You should refer to appropriate Survey Plans for confirmation of individual unit areas.



WATERVIEW STATION  
INVESTMENTS PTY. LTD



Lot 1 Knowles Road, Coolbidge,  
Qld, Australia 4850

**WATERVIEW**  
RETIREMENT VILLAGE

# TYPE A11 BUILDING 1

APARTMENT NUMBER



1 BATH



1 BED



OPEN PLAN

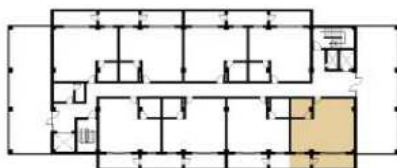


1 CARPARK

UNIT 11 | UNIT 30



BED AREA	11.50 SQM
BATHROOM	7.70 SQM
LIVING/DINING/KITCHEN	41.50 SQM
VERANDA	16.75 SQM
<hr/>	
TOTAL AREA	77.45 SQM



Occurs  
Level 3 & 6

Furnishings are for illustrative purposes only and are not included in the unit. This plan is not to scale. Please note that the information contained in the brochure including the floor plan contained within it, was prepared prior to completion of construction and may be subjected to change without prior notice before the completion of the project. The finished construction may be materially different from the depicted in this brochure. This material and all design is copyright and is the property of Waterview Station Investments Pty. Ltd. This material must not be used, reproduced or copied wholly or in part without prior written permission of Waterview Station Investments Pty. Ltd. These plans were prepared on 2023 but design, dimensions, specifications and materials are indicative only and are subject to change without notice at anytime and intending purchasers should undertake their own independent inquiries to satisfy themselves regarding the status of these plans. You should refer to appropriate Survey Plans for confirmation of individual unit areas.



WATERVIEW STATION  
INVESTMENTS PTY. LTD



Lot 1 Knowles Road, Coolbie,  
Qld, Australia 4850

**WATERVIEW**  
RETIREMENT VILLAGE

# TYPE A12 BUILDING 1

APARTMENT NUMBER



1 BATH



1 BED



OPEN PLAN

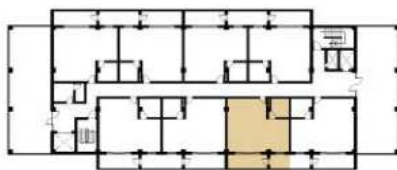


1 CARPARK

UNIT 12 | UNIT 31



BED AREA	10.50 SQM
BATHROOM	7.70 SQM
LIVING/DINING/KITCHEN	41.60 SQM
VERANDA	16.50 SQM
<hr/>	
TOTAL AREA	76.30 SQM



Occurs  
Level 3 & 6

Furnishings are for illustrative purposes only and are not included in the unit. This plan is not to scale. Please note that the information contained in the brochure including the floor plan contained within it, was prepared prior to completion of construction and may be subjected to change without prior notice before the completion of the project. The finished construction may be materially different from the depicted in this brochure. This material and all design is copyright and is the property of Waterview Station Investments Pty. Ltd. This material must not be used, reproduced or copied wholly or in part without prior written permission of Waterview Station Investments Pty. Ltd. These plans were prepared on 2023 but design, dimensions, specifications and materials are indicative only and are subject to change without notice at anytime and intending purchasers should undertake their own independent inquiries to satisfy themselves regarding the status of these plans. You should refer to appropriate Survey Plans for confirmation of individual unit areas.



WATERVIEW STATION  
INVESTMENTS PTY. LTD



Lot 1 Knowles Road, Coolibie,  
Qld, Australia 4850

**WATERVIEW**  
RETIREMENT VILLAGE

# TYPE A13 BUILDING 1

APARTMENT NUMBER



1 BATH



1 BED



OPEN PLAN

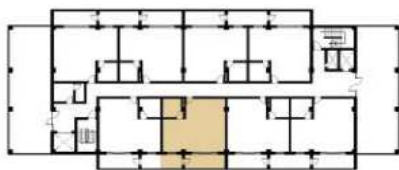


1 CARPARK

UNIT 13 | UNIT 32



BED AREA	10.50 SQM
BATHROOM	7.70 SQM
LIVING/DINING/KITCHEN	41.60 SQM
VERANDA	16.50 SQM
<hr/>	
TOTAL AREA	76.30 SQM



Occurs  
Level 3 & 6

Furnishings are for illustrative purposes only and are not included in the unit. This plan is not to scale. Please note that the information contained in the brochure including the floor plan contained within it, was prepared prior to completion of construction and may be subjected to change without prior notice before the completion of the project. The finished construction may be materially different from the depicted in this brochure. This material and all design is copyright and is the property of Waterview Station Investments Pty. Ltd. This material must not be used, reproduced or copied wholly or in part without prior written permission of Waterview Station Investments Pty. Ltd. These plans were prepared on 2023 but design, dimensions, specifications and materials are indicative only and are subject to change without notice at anytime and intending purchasers should undertake their own independent inquiries to satisfy themselves regarding the status of these plans. You should refer to appropriate Survey Plans for confirmation of individual unit areas.



WATERVIEW STATION  
INVESTMENTS PTY. LTD



Lot 1 Knowles Road, Coolbie,  
Qld, Australia 4850

WATERVIEW  
RETIREMENT VILLAGE

# TYPE A14 BUILDING 1

APARTMENT NUMBER



1 BATH



1 BED



OPEN PLAN

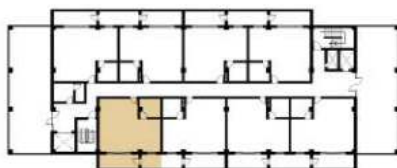


1 CARPARK

UNIT 14 | UNIT 33



BED AREA	10.50 SQM
BATHROOM	7.70 SQM
LIVING/DINING/KITCHEN	41.60 SQM
VERANDA	16.50 SQM
<hr/>	
TOTAL AREA	76.30 SQM



Occurs  
Level 3 & 6

Furnishings are for illustrative purposes only and are not included in the unit. This plan is not to scale. Please note that the information contained in the brochure including the floor plan contained within it, was prepared prior to completion of construction and may be subjected to change without prior notice before the completion of the project. The finished construction may be materially different from the depicted in this brochure. This material and all design is copyright and is the property of Waterview Station Investments Pty. Ltd. This material must not be used, reproduced or copied wholly or in part without prior written permission of Waterview Station Investments Pty. Ltd. These plans were prepared on 2023 but design, dimensions, specifications and materials are indicative only and are subject to change without notice at anytime and intending purchasers should undertake their own independent inquiries to satisfy themselves regarding the status of these plans. You should refer to appropriate Survey Plans for confirmation of individual unit areas.



WATERVIEW STATION  
INVESTMENTS PTY. LTD



Lot 1 Knowles Road, Coolbie,  
Qld, Australia 4850

**WATERVIEW**  
RETIREMENT VILLAGE

# TYPE A15 BUILDING 1

APARTMENT NUMBER



1 BATH



2 BED



OPEN PLAN

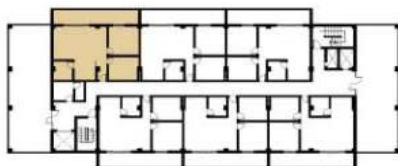


1 CARPARK

UNIT 20 | UNIT 39



BEDROOM 1	17.00 SQM
BEDROOM 2	13.50 SQM
BATHROOM	7.00 SQM
LIVING/DINING/KITCHEN	44.80 SQM
VERANDA	22.75 SQM
<b>TOTAL AREA</b>	<b>105.00 SQM</b>



Occurs  
Level 5 & 8

Furnishings are for illustrative purposes only and are not included in the unit. This plan is not to scale. Please note that the information contained in the brochure including the floor plan contained within it, was prepared prior to completion of construction and may be subjected to change without prior notice before the completion of the project. The finished construction may be materially different from the depicted in this brochure. This material and all design is copyright and is the property of Waterview Station Investments Pty. Ltd. This material must not be used, reproduced or copied wholly or in part without prior written permission of Waterview Station Investments Pty. Ltd. These plans were prepared on 2023 but design, dimensions, specifications and materials are indicative only and are subject to change without notice at anytime and intending purchasers should undertake their own independent inquiries to satisfy themselves regarding the status of these plans. You should refer to appropriate Survey Plans for confirmation of individual unit areas.



WATERVIEW STATION  
INVESTMENTS PTY. LTD



Lot 1 Knowles Road, Coolbie,  
Qld, Australia 4850

**WATERVIEW**  
RETIREMENT VILLAGE

# TYPE A16 BUILDING 1

APARTMENT NUMBER



1 BATH



2 BED



OPEN PLAN

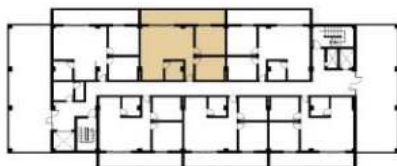


1 CARPARK

UNIT 21 | UNIT 40



BEDROOM 1	16.35 SQM
BEDROOM 2	13.00 SQM
BATHROOM	7.00 SQM
LIVING/DINING/KITCHEN	44.00 SQM
VERANDA	22.00 SQM
<b>TOTAL AREA</b>	<b>102.35 SQM</b>



Occurs  
Level 5 & 8

Furnishings are for illustrative purposes only and are not included in the unit. This plan is not to scale. Please note that the information contained in the brochure including the floor plan contained within it, was prepared prior to completion of construction and may be subjected to change without prior notice before the completion of the project. The finished construction may be materially different from the depicted in this brochure. This material and all design is copyright and is the property of Waterview Station Investments Pty. Ltd. This material must not be used, reproduced or copied wholly or in part without prior written permission of Waterview Station Investments Pty. Ltd. These plans were prepared on 2023 but design, dimensions, specifications and materials are indicative only and are subject to change without notice at anytime and intending purchasers should undertake their own independent inquiries to satisfy themselves regarding the status of these plans. You should refer to appropriate Survey Plans for confirmation of individual unit areas.



WATERVIEW STATION  
INVESTMENTS PTY. LTD



Lot 1 Knowles Road, Coolbie,  
Qld, Australia 4850

**WATERVIEW**  
RETIREMENT VILLAGE



# TYPE A17 BUILDING 1

APARTMENT NUMBER



1 BATH



2 BED



OPEN PLAN

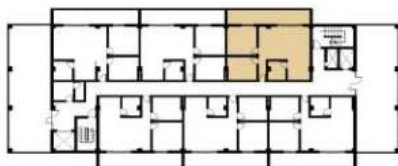


1 CARPARK

UNIT 22 | UNIT 41



BEDROOM 1	16.35 SQM
BEDROOM 2	13.00 SQM
BATHROOM	7.00 SQM
LIVING/DINING/KITCHEN	44.00 SQM
VERANDA	22.00 SQM
<b>TOTAL AREA</b>	<b>102.35 SQM</b>



Occurs  
Level 5 & 8

Furnishings are for illustrative purposes only and are not included in the unit. This plan is not to scale. Please note that the information contained in the brochure including the floor plan contained within it, was prepared prior to completion of construction and may be subjected to change without prior notice before the completion of the project. The finished construction may be materially different from the depicted in this brochure. This material and all design is copyright and is the property of Waterview Station Investments Pty. Ltd. This material must not be used, reproduced or copied wholly or in part without prior written permission of Waterview Station Investments Pty. Ltd. These plans were prepared on 2023 but design, dimensions, specifications and materials are indicative only and are subject to change without notice at anytime and intending purchasers should undertake their own independent inquiries to satisfy themselves regarding the status of these plans. You should refer to appropriate Survey Plans for confirmation of individual unit areas.



WATERVIEW STATION  
INVESTMENTS PTY. LTD



Lot 1 Knowles Road, Coolbidge,  
Qld, Australia 4850

**WATERVIEW**  
RETIREMENT VILLAGE

# TYPE A18 BUILDING 1

APARTMENT NUMBER



1 BATH



2 BED



OPEN PLAN

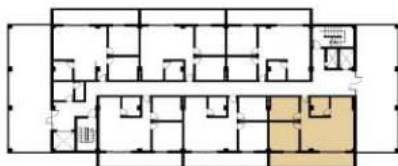


1 CARPARK

UNIT 23 | UNIT 42



BEDROOM 1	16.35 SQM
BEDROOM 2	13.00 SQM
BATHROOM	7.00 SQM
LIVING/DINING/KITCHEN	44.75 SQM
VERANDA	22.25 SQM
<b>TOTAL AREA</b>	<b>103.35 SQM</b>



Occurs  
Level 5 & 8

Furnishings are for illustrative purposes only and are not included in the unit. This plan is not to scale. Please note that the information contained in the brochure including the floor plan contained within it, was prepared prior to completion of construction and may be subjected to change without prior notice before the completion of the project. The finished construction may be materially different from the depicted in this brochure. This material and all design is copyright and is the property of Waterview Station Investments Pty. Ltd. This material must not be used, reproduced or copied wholly or in part without prior written permission of Waterview Station Investments Pty. Ltd. These plans were prepared on 2023 but design, dimensions, specifications and materials are indicative only and are subject to change without notice at anytime and intending purchasers should undertake their own independent inquiries to satisfy themselves regarding the status of these plans. You should refer to appropriate Survey Plans for confirmation of individual unit areas.



WATERVIEW STATION  
INVESTMENTS PTY. LTD



Lot 1 Knowles Road, Coolbriac,  
Qld, Australia 4850

**WATERVIEW**  
RETIREMENT VILLAGE

# TYPE A19 BUILDING 1

APARTMENT NUMBER



1 BATH



2 BED



OPEN PLAN

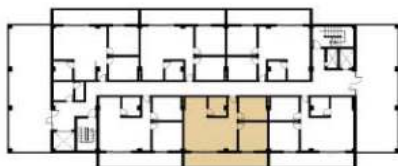


1 CARPARK

UNIT 24 | UNIT 43



BEDROOM 1	16.35 SQM
BEDROOM 2	13.00 SQM
BATHROOM	7.00 SQM
LIVING/DINING/KITCHEN	44.00 SQM
VERANDA	22.00 SQM
<b>TOTAL AREA</b>	<b>102.35 SQM</b>



Occurs  
Level 5 & 8

Furnishings are for illustrative purposes only and are not included in the unit. This plan is not to scale. Please note that the information contained in the brochure including the floor plan contained within it, was prepared prior to completion of construction and may be subjected to change without prior notice before the completion of the project. The finished construction may be materially different from the depicted in this brochure. This material and all design is copyright and is the property of Waterview Station Investments Pty. Ltd. This material must not be used, reproduced or copied wholly or in part without prior written permission of Waterview Station Investments Pty. Ltd. These plans were prepared on 2023 but design, dimensions, specifications and materials are indicative only and are subject to change without notice at anytime and intending purchasers should undertake their own independent inquiries to satisfy themselves regarding the status of these plans. You should refer to appropriate Survey Plans for confirmation of individual unit areas.



WATERVIEW STATION  
INVESTMENTS PTY. LTD



Lot 1 Knowles Road, Coolbie,  
Qld, Australia 4850

**WATERVIEW**  
RETIREMENT VILLAGE

# TYPE A20 BUILDING 1

APARTMENT NUMBER



1 BATH



2 BED



OPEN PLAN

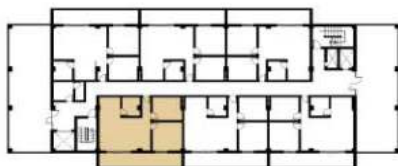


1 CARPARK

UNIT 25 | UNIT 44



BEDROOM 1	16.35 SQM
BEDROOM 2	13.00 SQM
BATHROOM	7.00 SQM
LIVING/DINING/KITCHEN	44.00 SQM
VERANDA	22.00 SQM
<b>TOTAL AREA</b>	<b>102.35 SQM</b>



Occurs  
Level 5 & 8

Furnishings are for illustrative purposes only and are not included in the unit. This plan is not to scale. Please note that the information contained in the brochure including the floor plan contained within it, was prepared prior to completion of construction and may be subjected to change without prior notice before the completion of the project. The finished construction may be materially different from the depicted in this brochure. This material and all design is copyright and is the property of Waterview Station Investments Pty. Ltd. This material must not be used, reproduced or copied wholly or in part without prior written permission of Waterview Station Investments Pty. Ltd. These plans were prepared on 2023 but design, dimensions, specifications and materials are indicative only and are subject to change without notice at anytime and intending purchasers should undertake their own independent inquiries to satisfy themselves regarding the status of these plans. You should refer to appropriate Survey Plans for confirmation of individual unit areas.



WATERVIEW STATION  
INVESTMENTS PTY. LTD



Lot 1 Knowles Road, Coolbie,  
Qld, Australia 4850

**WATERVIEW**  
RETIREMENT VILLAGE

# TYPE A21 BUILDING 1

APARTMENT NUMBER



2 BATH



2 BED



OPEN PLAN

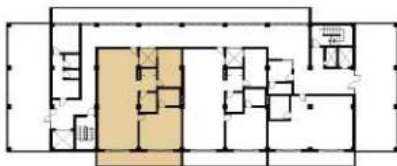


1 CARPARK

UNIT 45 | UNIT 48 | UNIT 51 | UNIT 54



BEDROOM 1	29.75 SQM
ENSUITE T&B	16.15 SQM
BEDROOM 2	7.65 SQM
BATHROOM	6.35 SQM
LIVING/DINING/KITCHEN	80.50 SQM
VERANDA	22.00 SQM
<b>TOTAL AREA</b>	<b>162.40 SQM</b>



Occurs  
Level 9 &10  
11 &12

Furnishings are for illustrative purposes only and are not included in the unit. This plan is not to scale. Please note that the information contained in the brochure including the floor plan contained within it, was prepared prior to completion of construction and may be subjected to change without prior notice before the completion of the project. The finished construction may be materially different from the depicted in this brochure. This material and all design is copyright and is the property of Waterview Station Investments Pty. Ltd. This material must not be used, reproduced or copied wholly or in part without prior written permission of Waterview Station Investments Pty. Ltd. These plans were prepared on 2023 but design, dimensions, specifications and materials are indicative only and are subject to change without notice at anytime and intending purchasers should undertake their own independent inquiries to satisfy themselves regarding the status of these plans. You should refer to appropriate Survey Plans for confirmation of individual unit areas.



WATERVIEW STATION  
INVESTMENTS PTY. LTD



Lot 1 Knowles Road, Coolbair,  
Qld, Australia 4850

**WATERVIEW**  
RETIREMENT VILLAGE

# TYPE A22 BUILDING 1

APARTMENT NUMBER



2 BATH



2 BED



OPEN PLAN

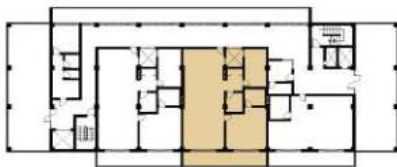


1 CARPARK

UNIT 46 | UNIT 49 | UNIT 52 | UNIT 55



BEDROOM 1	29.75 SQM
ENSUITE T&B	16.15 SQM
BEDROOM 2	7.65 SQM
BATHROOM	6.35 SQM
LIVING/DINING/KITCHEN	80.50 SQM
VERANDA	22.00 SQM
<b>TOTAL AREA</b>	<b>162.40 SQM</b>



Occurs  
Level 9 & 10  
11 & 12

Furnishings are for illustrative purposes only and are not included in the unit. This plan is not to scale. Please note that the information contained in the brochure including the floor plan contained within it, was prepared prior to completion of construction and may be subjected to change without prior notice before the completion of the project. The finished construction may be materially different from the depicted in this brochure. This material and all design is copyright and is the property of Waterview Station Investments Pty. Ltd. This material must not be used, reproduced or copied wholly or in part without prior written permission of Waterview Station Investments Pty. Ltd. These plans were prepared on 2023 but design, dimensions, specifications and materials are indicative only and are subject to change without notice at anytime and intending purchasers should undertake their own independent inquiries to satisfy themselves regarding the status of these plans. You should refer to appropriate Survey Plans for confirmation of individual unit areas.



WATERVIEW STATION  
INVESTMENTS PTY. LTD



Lot 1 Knowles Road, Coolbidge,  
Qld, Australia 4850

**WATERVIEW**  
RETIREMENT VILLAGE

# TYPE A23 BUILDING 1

APARTMENT NUMBER



1 BATH



1 BED



OPEN PLAN

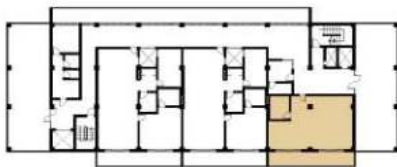


1 CARPARK

UNIT 47 | UNIT 50 | UNIT 53 | UNIT 56



BED AREA	14.00 SQM
BATHROOM	9.50 SQM
LIVING/DINING/KITCHEN	57.50 SQM
VERANDA	22.50 SQM
<b>TOTAL AREA</b>	<b>103.50 SQM</b>



Occurs  
Level 9 & 10  
11 & 12

Furnishings are for illustrative purposes only and are not included in the unit. This plan is not to scale. Please note that the information contained in the brochure including the floor plan contained within it, was prepared prior to completion of construction and may be subjected to change without prior notice before the completion of the project. The finished construction may be materially different from the depicted in this brochure. This material and all design is copyright and is the property of Waterview Station Investments Pty. Ltd. This material must not be used, reproduced or copied wholly or in part without prior written permission of Waterview Station Investments Pty. Ltd. These plans were prepared on 2023 but design, dimensions, specifications and materials are indicative only and are subject to change without notice at anytime and intending purchasers should undertake their own independent inquiries to satisfy themselves regarding the status of these plans. You should refer to appropriate Survey Plans for confirmation of individual unit areas.



WATERVIEW STATION  
INVESTMENTS PTY. LTD



Lot 1 Knowles Road, Coolbie,  
Qld, Australia 4850

**WATERVIEW**  
RETIREMENT VILLAGE

# TYPE A24 BUILDING 1

APARTMENT NUMBER



2 BATH



2 BED



OPEN PLAN

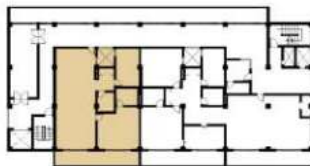


1 CARPARK

UNIT 57 | UNIT 59 | UNIT 61



BEDROOM 1	29.75 SQM
ENSUITE T&B	16.15 SQM
BEDROOM 2	7.65 SQM
BATHROOM	6.35 SQM
LIVING/DINING/KITCHEN	80.50 SQM
VERANDA	22.00 SQM
<b>TOTAL AREA</b>	<b>162.40 SQM</b>



Occurs  
Level 13, 14, & 15

Furnishings are for illustrative purposes only and are not included in the unit. This plan is not to scale. Please note that the information contained in the brochure including the floor plan contained within it, was prepared prior to completion of construction and may be subjected to change without prior notice before the completion of the project. The finished construction may be materially different from the depicted in this brochure. This material and all design is copyright and is the property of Waterview Station Investments Pty. Ltd. This material must not be used, reproduced or copied wholly or in part without prior written permission of Waterview Station Investments Pty. Ltd. These plans were prepared on 2023 but design, dimensions, specifications and materials are indicative only and are subject to change without notice at anytime and intending purchasers should undertake their own independent inquiries to satisfy themselves regarding the status of these plans. You should refer to appropriate Survey Plans for confirmation of individual unit areas.



WATERVIEW STATION  
INVESTMENTS PTY. LTD



Lot 1 Knowles Road, Coolbrie,  
Qld, Australia 4850

**WATERVIEW**  
RETIREMENT VILLAGE



# TYPE A25 BUILDING 1

APARTMENT NUMBER



2 BATH



3 BED



OPEN PLAN

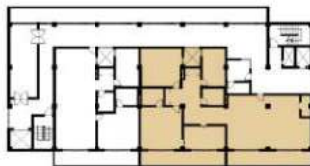


1 CARPARK

UNIT 58 | UNIT 60 | UNIT 62



MASTER BEDROOM	31.65 SQM
ENSUITE T&B	7.65 SQM
BEDROOM 1	27.75 SQM
BEDROOM 2	16.15 SQM
COMMON T&B	7.65 SQM
STUDY ROOM	18.30 SQM
LIVING/DINING/KITCHEN	111.90 SQM
VERANDA	44.50 SQM
<b>TOTAL AREA</b>	<b>265.55 SQM</b>



Occurs  
Level 13, 14, & 15

Furnishings are for illustrative purposes only and are not included in the unit. This plan is not to scale. Please note that the information contained in the brochure including the floor plan contained within it, was prepared prior to completion of construction and may be subjected to change without prior notice before the completion of the project. The finished construction may be materially different from the depicted in this brochure. This material and all design is copyright and is the property of Waterview Station Investments Pty. Ltd. This material must not be used, reproduced or copied wholly or in part without prior written permission of Waterview Station Investments Pty. Ltd. These plans were prepared on 2023 but design, dimensions, specifications and materials are indicative only and are subject to change without notice at anytime and intending purchasers should undertake their own independent inquiries to satisfy themselves regarding the status of these plans. You should refer to appropriate Survey Plans for confirmation of individual unit areas.



WATERVIEW STATION  
INVESTMENTS PTY. LTD



Lot 1 Knowles Road, Coolbidge,  
Qld, Australia 4850

**WATERVIEW**  
RETIREMENT VILLAGE

# TYPE A1 BUILDING 2

APARTMENT NUMBER



1 BATH



1 BED



OPEN PLAN

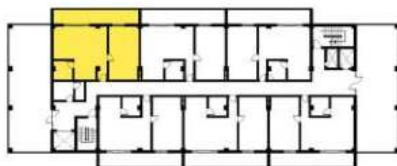


1 CARPARK

UNIT 1 | UNIT 15 | UNIT 34



MASTER BEDROOM	30.45 SQM
BATHROOM	7.25 SQM
LIVING/DINING/KITCHEN	44.80 SQM
VERANDA	22.75 SQM
<b>TOTAL AREA</b>	<b>105.25 SQM</b>



Occurs  
Level 2, 4, 7

Furnishings are for illustrative purposes only and are not included in the unit. This plan is not to scale. Please note that the information contained in the brochure including the floor plan contained within it, was prepared prior to completion of construction and may be subjected to change without prior notice before the completion of the project. The finished construction may be materially different from the depicted in this brochure. This material and all design is copyright and is the property of Waterview Station Investments Pty. Ltd. This material must not be used, reproduced or copied wholly or in part without prior written permission of Waterview Station Investments Pty. Ltd. These plans were prepared on 2023 but design, dimensions, specifications and materials are indicative only and are subject to change without notice at anytime and intending purchasers should undertake their own independent inquiries to satisfy themselves regarding the status of these plans. You should refer to appropriate Survey Plans for confirmation of individual unit areas.



WATERVIEW STATION  
INVESTMENTS PTY. LTD



Lot 1 Knowles Road, Coolibie,  
Qld, Australia 4850

WATERVIEW  
RETIREMENT VILLAGE

# TYPE A2 BUILDING 2

APARTMENT NUMBER



1 BATH



1 BED



OPEN PLAN

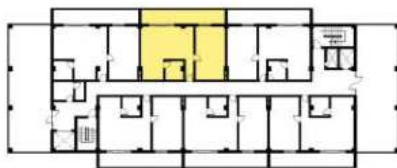


1 CARPARK

UNIT 2 | UNIT 16 | UNIT 35



MASTER BEDROOM	29.20 SQM
BATHROOM	7.00 SQM
LIVING/DINING/KITCHEN	44.00 SQM
VERANDA	22.00 SQM
<b>TOTAL AREA</b>	<b>102.20 SQM</b>



Occurs  
Level 2, 4, 7

Furnishings are for illustrative purposes only and are not included in the unit. This plan is not to scale. Please note that the information contained in the brochure including the floor plan contained within it, was prepared prior to completion of construction and may be subjected to change without prior notice before the completion of the project. The finished construction may be materially different from the depicted in this brochure. This material and all design is copyright and is the property of Waterview Station Investments Pty. Ltd. This material must not be used, reproduced or copied wholly or in part without prior written permission of Waterview Station Investments Pty. Ltd. These plans were prepared on 2023 but design, dimensions, specifications and materials are indicative only and are subject to change without notice at anytime and intending purchasers should undertake their own independent inquiries to satisfy themselves regarding the status of these plans. You should refer to appropriate Survey Plans for confirmation of individual unit areas.



WATERVIEW STATION  
INVESTMENTS PTY. LTD



Lot 1 Knowles Road, Coolibee,  
Qld, Australia 4850

WATERVIEW  
RETIREMENT VILLAGE

# TYPE A3 BUILDING 2

APARTMENT NUMBER



1 BATH



1 BED



OPEN PLAN

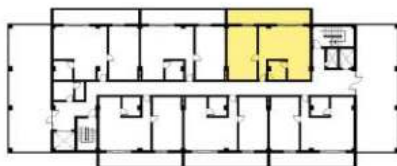


1 CARPARK

UNIT 3 | UNIT 17 | UNIT 36



MASTER BEDROOM	29.20 SQM
BATHROOM	7.00 SQM
LIVING/DINING/KITCHEN	44.00 SQM
VERANDA	22.00 SQM
<b>TOTAL AREA</b>	<b>102.20 SQM</b>



Occurs  
Level 2, 4, 7

Furnishings are for illustrative purposes only and are not included in the unit. This plan is not to scale. Please note that the information contained in the brochure including the floor plan contained within it, was prepared prior to completion of construction and may be subjected to change without prior notice before the completion of the project. The finished construction may be materially different from the depicted in this brochure. This material and all design is copyright and is the property of Waterview Station Investments Pty. Ltd. This material must not be used, reproduced or copied wholly or in part without prior written permission of Waterview Station Investments Pty. Ltd. These plans were prepared on 2023 but design, dimensions, specifications and materials are indicative only and are subject to change without notice at anytime and intending purchasers should undertake their own independent inquiries to satisfy themselves regarding the status of these plans. You should refer to appropriate Survey Plans for confirmation of individual unit areas.



WATERVIEW STATION  
INVESTMENTS PTY. LTD



Lot 1 Knowles Road, Coolibah,  
Qld, Australia 4850

WATERVIEW  
RETIREMENT VILLAGE

# TYPE A4 BUILDING 2

APARTMENT NUMBER



1 BATH



1 BED



OPEN PLAN

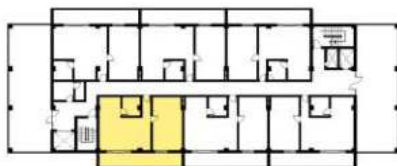


1 CARPARK

UNIT 4 | UNIT 19 | UNIT 38



MASTER BEDROOM	29.20 SQM
BATHROOM	7.00 SQM
LIVING/DINING/KITCHEN	44.00 SQM
VERANDA	22.00 SQM
<hr/>	
TOTAL AREA	102.20 SQM



Occurs  
Level 2, 4, 7

Furnishings are for illustrative purposes only and are not included in the unit. This plan is not to scale. Please note that the information contained in the brochure including the floor plan contained within it, was prepared prior to completion of construction and may be subjected to change without prior notice before the completion of the project. The finished construction may be materially different from the depicted in this brochure. This material and all design is copyright and is the property of Waterview Station Investments Pty. Ltd. This material must not be used, reproduced or copied wholly or in part without prior written permission of Waterview Station Investments Pty. Ltd. These plans were prepared on 2023 but design, dimensions, specifications and materials are indicative only and are subject to change without notice at anytime and intending purchasers should undertake their own independent inquiries to satisfy themselves regarding the status of these plans. You should refer to appropriate Survey Plans for confirmation of individual unit areas.



WATERVIEW STATION  
INVESTMENTS PTY. LTD



Lot 1 Knowles Road, Coolbie,  
Qld, Australia 4850

WATERVIEW  
RETIREMENT VILLAGE

# TYPE A5 BUILDING 2

APARTMENT NUMBER



1 BATH



1 BED



OPEN PLAN

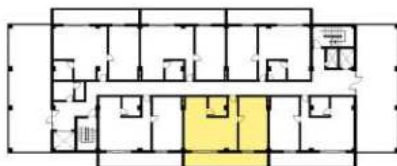


1 CARPARK

UNIT 5 | UNIT 18 | UNIT 37



MASTER BEDROOM	29.20 SQM
BATHROOM	7.00 SQM
LIVING/DINING/KITCHEN	44.00 SQM
VERANDA	22.00 SQM
<hr/>	
TOTAL AREA	102.20 SQM



Occurs  
Level 2, 4, 7

Furnishings are for illustrative purposes only and are not included in the unit. This plan is not to scale. Please note that the information contained in the brochure including the floor plan contained within it, was prepared prior to completion of construction and may be subjected to change without prior notice before the completion of the project. The finished construction may be materially different from the depicted in this brochure. This material and all design is copyright and is the property of Waterview Station Investments Pty. Ltd. This material must not be used, reproduced or copied wholly or in part without prior written permission of Waterview Station Investments Pty. Ltd. These plans were prepared on 2023 but design, dimensions, specifications and materials are indicative only and are subject to change without notice at anytime and intending purchasers should undertake their own independent inquiries to satisfy themselves regarding the status of these plans. You should refer to appropriate Survey Plans for confirmation of individual unit areas.



WATERVIEW STATION  
INVESTMENTS PTY. LTD



Lot 1 Knowles Road, Coolbie,  
Qld, Australia 4850

WATERVIEW  
RETIREMENT VILLAGE

# TYPE A6 BUILDING 2

APARTMENT NUMBER



1 BATH



1 BED



OPEN PLAN

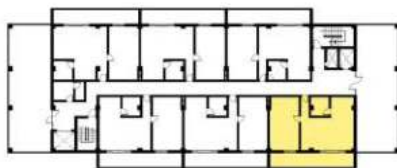


1 CARPARK

## UNIT 6



MASTER BEDROOM	29.20 SQM
BATHROOM	7.00 SQM
LIVING/DINING/KITCHEN	44.80 SQM
VERANDA	22.20 SQM
<hr/>	
TOTAL AREA	103.25 SQM



Occurs  
Level 2, 4, 7

Furnishings are for illustrative purposes only and are not included in the unit. This plan is not to scale. Please note that the information contained in the brochure including the floor plan contained within it, was prepared prior to completion of construction and may be subjected to change without prior notice before the completion of the project. The finished construction may be materially different from the depicted in this brochure. This material and all design is copyright and is the property of Waterview Station Investments Pty. Ltd. This material must not be used, reproduced or copied wholly or in part without prior written permission of Waterview Station Investments Pty. Ltd. These plans were prepared on 2023 but design, dimensions, specifications and materials are indicative only and are subject to change without notice at anytime and intending purchasers should undertake their own independent inquiries to satisfy themselves regarding the status of these plans. You should refer to appropriate Survey Plans for confirmation of individual unit areas.



WATERVIEW STATION  
INVESTMENTS PTY. LTD



Lot 1 Knowles Road, Coolibie,  
Qld, Australia 4850

WATERVIEW  
RETIREMENT VILLAGE

# TYPE A7 BUILDING 2

APARTMENT NUMBER



1 BATH



1 BED



OPEN PLAN

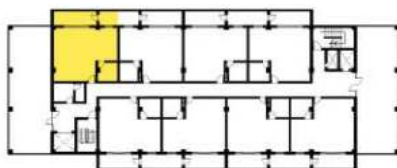


1 CARPARK

UNIT 7 | UNIT 26



BED AREA	11.50 SQM
BATHROOM	7.70 SQM
LIVING/DINING/KITCHEN	43.50 SQM
VERANDA	17.25 SQM
<hr/>	
TOTAL AREA	79.95 SQM



Occurs  
Level 3 & 6

Furnishings are for illustrative purposes only and are not included in the unit. This plan is not to scale. Please note that the information contained in the brochure including the floor plan contained within it, was prepared prior to completion of construction and may be subjected to change without prior notice before the completion of the project. The finished construction may be materially different from the depicted in this brochure. This material and all design is copyright and is the property of Waterview Station Investments Pty. Ltd. This material must not be used, reproduced or copied wholly or in part without prior written permission of Waterview Station Investments Pty. Ltd. These plans were prepared on 2023 but design, dimensions, specifications and materials are indicative only and are subject to change without notice at anytime and intending purchasers should undertake their own independent inquiries to satisfy themselves regarding the status of these plans. You should refer to appropriate Survey Plans for confirmation of individual unit areas.



WATERVIEW STATION  
INVESTMENTS PTY. LTD



Lot 1 Knowles Road, Coolbie  
Q19, Australia 4850

WATERVIEW  
RETIREMENT VILLAGE



# TYPE A8 BUILDING 2

APARTMENT NUMBER



1 BATH



1 BED



OPEN PLAN

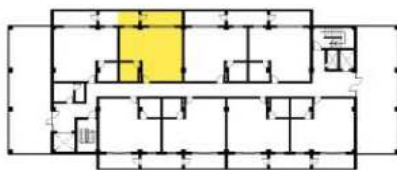


1 CARPARK

UNIT 8 | UNIT 27



BED AREA	10.50 SQM
BATHROOM	7.70 SQM
LIVING/DINING/KITCHEN	41.60 SQM
VERANDA	16.50 SQM
<hr/>	
TOTAL AREA	76.30 SQM



Occurs  
Level 3 & 6

Furnishings are for illustrative purposes only and are not included in the unit. This plan is not to scale. Please note that the information contained in the brochure including the floor plan contained within it, was prepared prior to completion of construction and may be subjected to change without prior notice before the completion of the project. The finished construction may be materially different from the depicted in this brochure. This material and all design is copyright and is the property of Waterview Station Investments Pty. Ltd. This material must not be used, reproduced or copied wholly or in part without prior written permission of Waterview Station Investments Pty. Ltd. These plans were prepared on 2023 but design, dimensions, specifications and materials are indicative only and are subject to change without notice at anytime and intending purchasers should undertake their own independent inquiries to satisfy themselves regarding the status of these plans. You should refer to appropriate Survey Plans for confirmation of individual unit areas.



WATERVIEW STATION  
INVESTMENTS PTY. LTD.



Lot 1 Knowles Road, Coobee  
Q.I.G. Australia 4850

WATERVIEW  
RETIREMENT VILLAGE

# TYPE A9 BUILDING 2

APARTMENT NUMBER



1 BATH



1 BED



OPEN PLAN

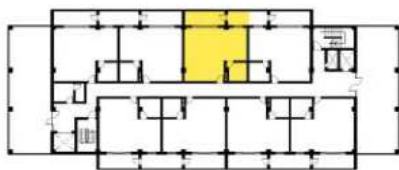


1 CARPARK

UNIT 9 | UNIT 28



BED AREA	10.50 SQM
BATHROOM	7.70 SQM
LIVING/DINING/KITCHEN	41.60 SQM
VERANDA	16.50 SQM
<hr/>	
TOTAL AREA	76.30 SQM



Occurs  
Level 3 & 6

Furnishings are for illustrative purposes only and are not included in the unit. This plan is not to scale. Please note that the information contained in the brochure including the floor plan contained within it, was prepared prior to completion of construction and may be subjected to change without prior notice before the completion of the project. The finished construction may be materially different from the depicted in this brochure. This material and all design is copyright and is the property of Waterview Station Investments Pty. Ltd. This material must not be used, reproduced or copied wholly or in part without prior written permission of Waterview Station Investments Pty. Ltd. These plans were prepared on 2023 but design, dimensions, specifications and materials are indicative only and are subject to change without notice at anytime and intending purchasers should undertake their own independent inquiries to satisfy themselves regarding the status of these plans. You should refer to appropriate Survey Plans for confirmation of individual unit areas.



WATERVIEW STATION  
INVESTMENTS PTY. LTD



Lot 1 Knowles Road, Coolbri  
Qld, Australia 4850

WATERVIEW  
RETIREMENT VILLAGE

# TYPE A10 BUILDING 2

APARTMENT NUMBER



1 BATH



1 BED



OPEN PLAN

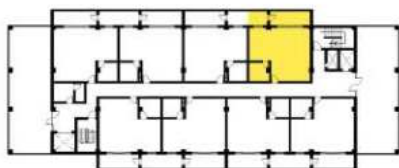


1 CARPARK

UNIT 10 | UNIT 29



BED AREA	10.50 SQM
BATHROOM	7.70 SQM
LIVING/DINING/KITCHEN	41.60 SQM
VERANDA	16.50 SQM
<hr/>	
TOTAL AREA	76.30 SQM



Occurs  
Level 3 & 6

Furnishings are for illustrative purposes only and are not included in the unit. This plan is not to scale. Please note that the information contained in the brochure including the floor plan contained within it, was prepared prior to completion of construction and may be subjected to change without prior notice before the completion of the project. The finished construction may be materially different from the depicted in this brochure. This material and all design is copyright and is the property of Waterview Station Investments Pty. Ltd. This material must not be used, reproduced or copied wholly or in part without prior written permission of Waterview Station Investments Pty. Ltd. These plans were prepared on 2023 but design, dimensions, specifications and materials are indicative only and are subject to change without notice at anytime and intending purchasers should undertake their own independent inquiries to satisfy themselves regarding the status of these plans. You should refer to appropriate Survey Plans for confirmation of individual unit areas.



WATERVIEW STATION  
INVESTMENTS PTY. LTD



Lot 1 Knowles Road, Coobee  
Q.I.G. Australia 4850

WATERVIEW  
RETIREMENT VILLAGE

# TYPE A11 BUILDING 2

APARTMENT NUMBER



1 BATH



1 BED



OPEN PLAN

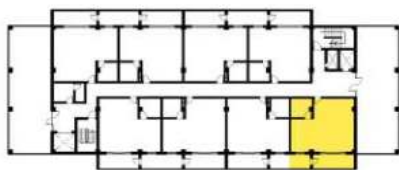


1 CARPARK

UNIT 11 | UNIT 30



BED AREA	11.50 SQM
BATHROOM	7.70 SQM
LIVING/DINING/KITCHEN	41.50 SQM
VERANDA	16.75 SQM
<hr/>	
TOTAL AREA	77.45 SQM



Occurs  
Level 3 & 6

Furnishings are for illustrative purposes only and are not included in the unit. This plan is not to scale. Please note that the information contained in the brochure including the floor plan contained within it, was prepared prior to completion of construction and may be subjected to change without prior notice before the completion of the project. The finished construction may be materially different from the depicted in this brochure. This material and all design is copyright and is the property of Waterview Station Investments Pty. Ltd. This material must not be used, reproduced or copied wholly or in part without prior written permission of Waterview Station Investments Pty. Ltd. These plans were prepared on 2023 but design, dimensions, specifications and materials are indicative only and are subject to change without notice at anytime and intending purchasers should undertake their own independent inquiries to satisfy themselves regarding the status of these plans. You should refer to appropriate Survey Plans for confirmation of individual unit areas.



WATERVIEW STATION  
INVESTMENTS PTY. LTD



Lot 1 Knowles Road, Coobee  
Qld, Australia 4850

WATERVIEW  
RETIREMENT VILLAGE

# TYPE A12 BUILDING 2

APARTMENT NUMBER



1 BATH



1 BED



OPEN PLAN

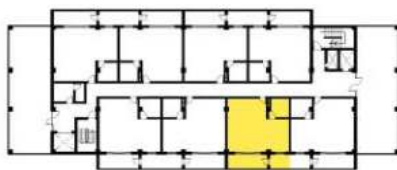


1 CARPARK

UNIT 12 | UNIT 31



BED AREA	10.50 SQM
BATHROOM	7.70 SQM
LIVING/DINING/KITCHEN	41.60 SQM
VERANDA	16.50 SQM
<hr/>	
TOTAL AREA	76.30 SQM



Occurs  
Level 3 & 6

Furnishings are for illustrative purposes only and are not included in the unit. This plan is not to scale. Please note that the information contained in the brochure including the floor plan contained within it, was prepared prior to completion of construction and may be subjected to change without prior notice before the completion of the project. The finished construction may be materially different from the depicted in this brochure. This material and all design is copyright and is the property of Waterview Station Investments Pty. Ltd. This material must not be used, reproduced or copied wholly or in part without prior written permission of Waterview Station Investments Pty. Ltd. These plans were prepared on 2023 but design, dimensions, specifications and materials are indicative only and are subject to change without notice at anytime and intending purchasers should undertake their own independent inquiries to satisfy themselves regarding the status of these plans. You should refer to appropriate Survey Plans for confirmation of individual unit areas.



WATERVIEW STATION  
INVESTMENTS PTY. LTD



Lot 1 Knowles Road, Coolbie  
Qld, Australia 4850

WATERVIEW  
RETIREMENT VILLAGE

# TYPE A13 BUILDING 2

APARTMENT NUMBER



1 BATH



1 BED



OPEN PLAN

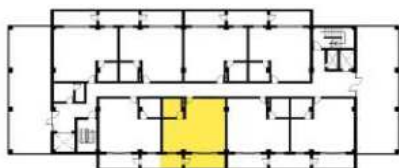


1 CARPARK

UNIT 13 | UNIT 32



BED AREA	10.50 SQM
BATHROOM	7.70 SQM
LIVING/DINING/KITCHEN	41.60 SQM
VERANDA	16.50 SQM
<hr/>	
TOTAL AREA	76.30 SQM



Occurs  
Level 3 & 6

Furnishings are for illustrative purposes only and are not included in the unit. This plan is not to scale. Please note that the information contained in the brochure including the floor plan contained within it, was prepared prior to completion of construction and may be subjected to change without prior notice before the completion of the project. The finished construction may be materially different from the depicted in this brochure. This material and all design is copyright and is the property of Waterview Station Investments Pty. Ltd. This material must not be used, reproduced or copied wholly or in part without prior written permission of Waterview Station Investments Pty. Ltd. These plans were prepared on 2023 but design, dimensions, specifications and materials are indicative only and are subject to change without notice at anytime and intending purchasers should undertake their own independent inquiries to satisfy themselves regarding the status of these plans. You should refer to appropriate Survey Plans for confirmation of individual unit areas.



WATERVIEW STATION  
INVESTMENTS PTY. LTD



Lot 1 Knowles Road, Coolbie  
Q19, Australia 4850

WATERVIEW  
RETIREMENT VILLAGE

# TYPE A14 BUILDING 2

APARTMENT NUMBER



1 BATH



1 BED



OPEN PLAN

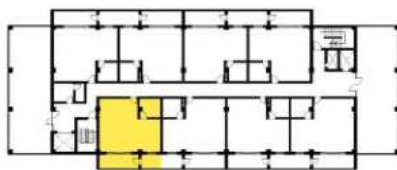


1 CARPARK

UNIT 14 | UNIT 33



BED AREA	10.50 SQM
BATHROOM	7.70 SQM
LIVING/DINING/KITCHEN	41.60 SQM
VERANDA	16.50 SQM
<hr/>	
TOTAL AREA	76.30 SQM



Occurs  
Level 3 & 6

Furnishings are for illustrative purposes only and are not included in the unit. This plan is not to scale. Please note that the information contained in the brochure including the floor plan contained within it, was prepared prior to completion of construction and may be subjected to change without prior notice before the completion of the project. The finished construction may be materially different from the depicted in this brochure. This material and all design is copyright and is the property of Waterview Station Investments Pty. Ltd. This material must not be used, reproduced or copied wholly or in part without prior written permission of Waterview Station Investments Pty. Ltd. These plans were prepared on 2023 but design, dimensions, specifications and materials are indicative only and are subject to change without notice at anytime and intending purchasers should undertake their own independent inquiries to satisfy themselves regarding the status of these plans. You should refer to appropriate Survey Plans for confirmation of individual unit areas.



WATERVIEW STATION  
INVESTMENTS PTY. LTD



Lot 1 Knowles Road, Coobee  
Q19, Australia 4850

WATERVIEW  
RETIREMENT VILLAGE

# TYPE A15 BUILDING 2

APARTMENT NUMBER



1 BATH



2 BED



OPEN PLAN

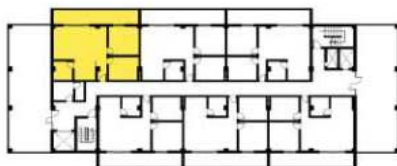


1 CARPARK

UNIT 20 | UNIT 39



BEDROOM 1	17.00 SQM
BEDROOM 2	13.50 SQM
BATHROOM	7.00 SQM
LIVING/DINING/KITCHEN	44.80 SQM
VERANDA	22.75 SQM
<b>TOTAL AREA</b>	<b>105.00 SQM</b>



Occurs  
Level 5 & 8

Furnishings are for illustrative purposes only and are not included in the unit. This plan is not to scale. Please note that the information contained in the brochure including the floor plan contained within it, was prepared prior to completion of construction and may be subjected to change without prior notice before the completion of the project. The finished construction may be materially different from the depicted in this brochure. This material and all design is copyright and is the property of Waterview Station Investments Pty. Ltd. This material must not be used, reproduced or copied wholly or in part without prior written permission of Waterview Station Investments Pty. Ltd. These plans were prepared on 2023 but design, dimensions, specifications and materials are indicative only and are subject to change without notice at anytime and intending purchasers should undertake their own independent inquiries to satisfy themselves regarding the status of these plans. You should refer to appropriate Survey Plans for confirmation of individual unit areas.



WATERVIEW STATION  
INVESTMENTS PTY. LTD



Lot 1 Knowles Road, Coolibee,  
Qld, Australia 4850

WATERVIEW  
RETIREMENT VILLAGE



# TYPE A16 BUILDING 2

APARTMENT NUMBER



1 BATH



2 BED



OPEN PLAN

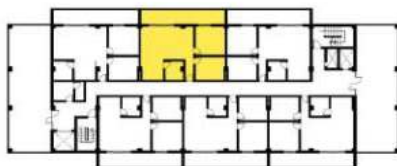


1 GARAGE

UNIT 21 | UNIT 40



BEDROOM 1	16.35 SQM
BEDROOM 2	13.00 SQM
BATHROOM	7.00 SQM
LIVING/DINING/KITCHEN	44.00 SQM
VERANDA	22.00 SQM
<b>TOTAL AREA</b>	<b>102.35 SQM</b>



Occurs  
Level 5 & 8

Furnishings are for illustrative purposes only and are not included in the unit. This plan is not to scale. Please note that the information contained in the brochure including the floor plan contained within it, was prepared prior to completion of construction and may be subjected to change without prior notice before the completion of the project. The finished construction may be materially different from the depicted in this brochure. This material and all design is copyright and is the property of Waterview Station Investments Pty. Ltd. This material must not be used, reproduced or copied wholly or in part without prior written permission of Waterview Station Investments Pty. Ltd. These plans were prepared on 2023 but design, dimensions, specifications and materials are indicative only and are subject to change without notice at anytime and intending purchasers should undertake their own independent inquiries to satisfy themselves regarding the status of these plans. You should refer to appropriate Survey Plans for confirmation of individual unit areas.



WATERVIEW STATION  
INVESTMENTS PTY. LTD



Lot 1 Knowles Road, Coolibee,  
Qld, Australia 4850

WATERVIEW  
RETIREMENT VILLAGE

# TYPE A17 BUILDING 2

APARTMENT NUMBER



1 BATH



2 BED



OPEN PLAN

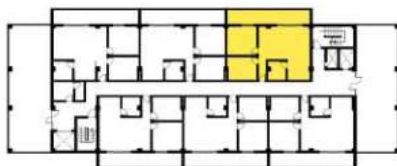


1 GARPARK

UNIT 22 | UNIT 41



BEDROOM 1	16.35 SQM
BEDROOM 2	13.00 SQM
BATHROOM	7.00 SQM
LIVING/DINING/KITCHEN	44.00 SQM
VERANDA	22.00 SQM
<b>TOTAL AREA</b>	<b>102.35 SQM</b>



Occurs  
Level 5 & 8

Furnishings are for illustrative purposes only and are not included in the unit. This plan is not to scale. Please note that the information contained in the brochure including the floor plan contained within it, was prepared prior to completion of construction and may be subjected to change without prior notice before the completion of the project. The finished construction may be materially different from the depicted in this brochure. This material and all design is copyright and is the property of Waterview Station Investments Pty. Ltd. This material must not be used, reproduced or copied wholly or in part without prior written permission of Waterview Station Investments Pty. Ltd. These plans were prepared on 2023 but design, dimensions, specifications and materials are indicative only and are subject to change without notice at anytime and intending purchasers should undertake their own independent inquiries to satisfy themselves regarding the status of these plans. You should refer to appropriate Survey Plans for confirmation of individual unit areas.



WATERVIEW STATION  
INVESTMENTS PTY. LTD



Lot 1 Knowles Road, Coolibee,  
Qld, Australia 4850

WATERVIEW  
RETIREMENT VILLAGE

# TYPE A18 BUILDING 2

APARTMENT NUMBER



1 BATH



2 BED



OPEN PLAN

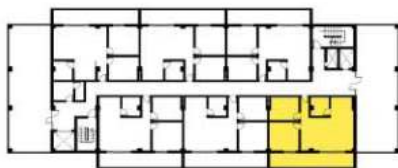


1 CARPARK

UNIT 23 | UNIT 42



BEDROOM 1	16.35 SQM
BEDROOM 2	13.00 SQM
BATHROOM	7.00 SQM
LIVING/DINING/KITCHEN	44.75 SQM
VERANDA	22.25 SQM
<b>TOTAL AREA</b>	<b>103.35 SQM</b>



Occurs  
Level 5 & 8

Furnishings are for illustrative purposes only and are not included in the unit. This plan is not to scale. Please note that the information contained in the brochure including the floor plan contained within it, was prepared prior to completion of construction and may be subjected to change without prior notice before the completion of the project. The finished construction may be materially different from the depicted in this brochure. This material and all design is copyright and is the property of Waterview Station Investments Pty. Ltd. This material must not be used, reproduced or copied wholly or in part without prior written permission of Waterview Station Investments Pty. Ltd. These plans were prepared on 2023 but design, dimensions, specifications and materials are indicative only and are subject to change without notice at anytime and intending purchasers should undertake their own independent inquiries to satisfy themselves regarding the status of these plans. You should refer to appropriate Survey Plans for confirmation of individual unit areas.



WATERVIEW STATION  
INVESTMENTS PTY. LTD



Lot 1 Knowles Road, Coolibee,  
Qld, Australia 4850

WATERVIEW  
RETIREMENT VILLAGE

# TYPE A19 BUILDING 2

APARTMENT NUMBER



1 BATH



2 BED



OPEN PLAN

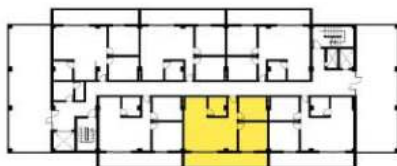


1 CARPARK

UNIT 24 | UNIT 43



BEDROOM 1	16.35 SQM
BEDROOM 2	13.00 SQM
BATHROOM	7.00 SQM
LIVING/DINING/KITCHEN	44.00 SQM
VERANDA	22.00 SQM
<b>TOTAL AREA</b>	<b>102.35 SQM</b>



Occurs  
Level 5 & 8

Furnishings are for illustrative purposes only and are not included in the unit. This plan is not to scale. Please note that the information contained in the brochure including the floor plan contained within it, was prepared prior to completion of construction and may be subjected to change without prior notice before the completion of the project. The finished construction may be materially different from the depicted in this brochure. This material and all design is copyright and is the property of Waterview Station Investments Pty. Ltd. This material must not be used, reproduced or copied wholly or in part without prior written permission of Waterview Station Investments Pty. Ltd. These plans were prepared on 2023 but design, dimensions, specifications and materials are indicative only and are subject to change without notice at anytime and intending purchasers should undertake their own independent inquiries to satisfy themselves regarding the status of these plans. You should refer to appropriate Survey Plans for confirmation of individual unit areas.



WATERVIEW STATION  
INVESTMENTS PTY. LTD



Lot 1 Knowles Road, Coolibah,  
Qld, Australia 4850

WATERVIEW  
RETIREMENT VILLAGE

# TYPE A20 BUILDING 2

APARTMENT NUMBER



1 BATH



2 BED



OPEN PLAN

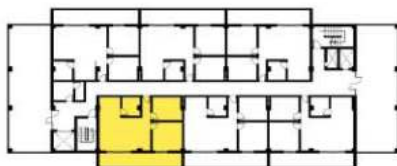


1 CARPARK

UNIT 25 | UNIT 44



BEDROOM 1	16.35 SQM
BEDROOM 2	13.00 SQM
BATHROOM	7.00 SQM
LIVING/DINING/KITCHEN	44.00 SQM
VERANDA	22.00 SQM
<b>TOTAL AREA</b>	<b>102.35 SQM</b>



Occurs  
Level 5 & 8

Furnishings are for illustrative purposes only and are not included in the unit. This plan is not to scale. Please note that the information contained in the brochure including the floor plan contained within it, was prepared prior to completion of construction and may be subjected to change without prior notice before the completion of the project. The finished construction may be materially different from the depicted in this brochure. This material and all design is copyright and is the property of Waterview Station Investments Pty. Ltd. This material must not be used, reproduced or copied wholly or in part without prior written permission of Waterview Station Investments Pty. Ltd. These plans were prepared on 2023 but design, dimensions, specifications and materials are indicative only and are subject to change without notice at anytime and intending purchasers should undertake their own independent inquiries to satisfy themselves regarding the status of these plans. You should refer to appropriate Survey Plans for confirmation of individual unit areas.



WATERVIEW STATION  
INVESTMENTS PTY. LTD



Lot 1 Knowles Road, Coolibee,  
Qld, Australia 4850

WATERVIEW  
RETIREMENT VILLAGE

# TYPE A21 BUILDING 2

APARTMENT NUMBER



2 BATH



2 BED



OPEN PLAN

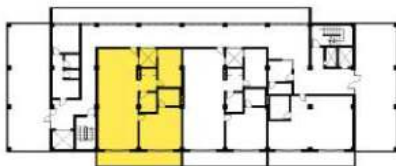


1 CARPARK

UNIT 45 | UNIT 48 | UNIT 51 | UNIT 54



BEDROOM 1	29.75 SQM
ENSUITE T&B	16.15 SQM
BEDROOM 2	7.65 SQM
BATHROOM	6.35 SQM
LIVING/DINING/KITCHEN	80.50 SQM
VERANDA	22.00 SQM
<b>TOTAL AREA</b>	<b>162.40 SQM</b>



Occurs  
Level 9 & 10  
11 & 12

Furnishings are for illustrative purposes only and are not included in the unit. This plan is not to scale. Please note that the information contained in the brochure including the floor plan contained within it, was prepared prior to completion of construction and may be subjected to change without prior notice before the completion of the project. The finished construction may be materially different from the depicted in this brochure. This material and all design is copyright and is the property of Waterview Station Investments Pty. Ltd. This material must not be used, reproduced or copied wholly or in part without prior written permission of Waterview Station Investments Pty. Ltd. These plans were prepared on 2023 but design, dimensions, specifications and materials are indicative only and are subject to change without notice at anytime and intending purchasers should undertake their own independent inquiries to satisfy themselves regarding the status of these plans. You should refer to appropriate Survey Plans for confirmation of individual unit areas.



WATERVIEW STATION  
INVESTMENTS PTY. LTD.



Lot 1 Knowles Road, Coolibee,  
Qld, Australia 4850

**WATERVIEW**  
RETIREMENT VILLAGE

# TYPE A22 BUILDING 2

APARTMENT NUMBER



2 BATH



2 BED



OPEN PLAN

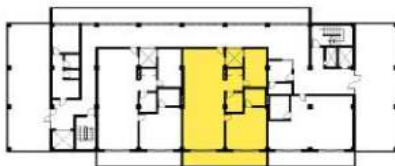


1 CARPARK

UNIT 46 | UNIT 49 | UNIT 52 | UNIT 55



BEDROOM 1	29.75 SQM
ENSUITE T&B	16.15 SQM
BEDROOM 2	7.65 SQM
BATHROOM	6.35 SQM
LIVING/DINING/KITCHEN	80.50 SQM
VERANDA	22.00 SQM
<b>TOTAL AREA</b>	<b>162.40 SQM</b>



Occurs  
Level 9 &10  
11 &12

Furnishings are for illustrative purposes only and are not included in the unit. This plan is not to scale. Please note that the information contained in the brochure including the floor plan contained within it, was prepared prior to completion of construction and may be subjected to change without prior notice before the completion of the project. The finished construction may be materially different from the depicted in this brochure. This material and all design is copyright and is the property of Waterview Station Investments Pty. Ltd. This material must not be used, reproduced or copied wholly or in part without prior written permission of Waterview Station Investments Pty. Ltd. These plans were prepared on 2023 but design, dimensions, specifications and materials are indicative only and are subject to change without notice at anytime and intending purchasers should undertake their own independent inquiries to satisfy themselves regarding the status of these plans. You should refer to appropriate Survey Plans for confirmation of individual unit areas.



WATERVIEW STATION  
INVESTMENTS PTY. LTD.



Lot 1 Knowles Road, Coolibee,  
Qld, Australia 4850

WATERVIEW  
RETIREMENT VILLAGE

# TYPE A23 BUILDING 2

APARTMENT NUMBER



1 BATH



1 BED



OPEN PLAN

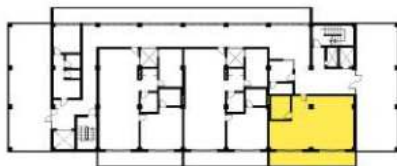


1 CARPARK

UNIT 47 | UNIT 50 | UNIT 53 | UNIT 56



BED AREA	14.00 SQM
BATHROOM	9.50 SQM
LIVING/DINING/KITCHEN	57.50 SQM
VERANDA	22.50 SQM
TOTAL AREA	103.50 SQM



Occurs  
Level 9 & 10  
11 & 12

Furnishings are for illustrative purposes only and are not included in the unit. This plan is not to scale. Please note that the information contained in the brochure including the floor plan contained within it, was prepared prior to completion of construction and may be subjected to change without prior notice before the completion of the project. The finished construction may be materially different from the depicted in this brochure. This material and all design is copyright and is the property of Waterview Station Investments Pty. Ltd. This material must not be used, reproduced or copied wholly or in part without prior written permission of Waterview Station Investments Pty. Ltd. These plans were prepared on 2023 but design, dimensions, specifications and materials are indicative only and are subject to change without notice at anytime and intending purchasers should undertake their own independent inquiries to satisfy themselves regarding the status of these plans. You should refer to appropriate Survey Plans for confirmation of individual unit areas.



WATERVIEW STATION  
INVESTMENTS PTY. LTD.



Lot 1 Knowles Road, Coolibie,  
Qld, Australia 4850

WATERVIEW  
RETIREMENT VILLAGE



# TYPE A24 BUILDING 2

APARTMENT NUMBER



2 BATH



2 BED



OPEN PLAN

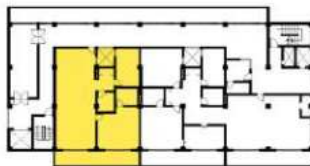


1 CARPARK

UNIT 57 | UNIT 59 | UNIT 61



BEDROOM 1	29.75 SQM
ENSUITE T&B	16.15 SQM
BEDROOM 2	7.65 SQM
BATHROOM	6.35 SQM
LIVING/DINING/KITCHEN	80.50 SQM
VERANDA	22.00 SQM
<b>TOTAL AREA</b>	<b>162.40 SQM</b>



Occurs  
Level 13, 14, & 15

Furnishings are for illustrative purposes only and are not included in the unit. This plan is not to scale. Please note that the information contained in the brochure including the floor plan contained within it, was prepared prior to completion of construction and may be subjected to change without prior notice before the completion of the project. The finished construction may be materially different from the depicted in this brochure. This material and all design is copyright and is the property of Waterview Station Investments Pty. Ltd. This material must not be used, reproduced or copied wholly or in part without prior written permission of Waterview Station Investments Pty. Ltd. These plans were prepared on 2023 but design, dimensions, specifications and materials are indicative only and are subject to change without notice at anytime and intending purchasers should undertake their own independent inquiries to satisfy themselves regarding the status of these plans. You should refer to appropriate Survey Plans for confirmation of individual unit areas.



WATERVIEW STATION  
INVESTMENTS PTY. LTD.



Lot 1 Knowles Road, Coolibee,  
Qld, Australia 4850

WATERVIEW  
RETIREMENT VILLAGE

# TYPE A25 BUILDING 2

APARTMENT NUMBER



2 BATH



3 BDR



OPEN PLAN

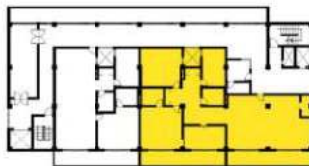


1 GARPARK

UNIT 58 | UNIT 60 | UNIT 62



MASTER BEDROOM	31.65 SQM
ENSUITE T&B	7.65 SQM
BEDROOM 1	27.75 SQM
BEDROOM 2	16.15 SQM
COMMON T&B	7.65 SQM
STUDY ROOM	18.30 SQM
LIVING/DINING/KITCHEN	111.90 SQM
VERANDA	44.50 SQM
<b>TOTAL AREA</b>	<b>265.55 SQM</b>



Occurs  
Level 13, 14, & 15

Furnishings are for illustrative purposes only and are not included in the unit. This plan is not to scale. Please note that the information contained in the brochure including the floor plan contained within it, was prepared prior to completion of construction and may be subjected to change without prior notice before the completion of the project. The finished construction may be materially different from the depicted in this brochure. This material and all design is copyright and is the property of Waterview Station Investments Pty. Ltd. This material must not be used, reproduced or copied wholly or in part without prior written permission of Waterview Station Investments Pty. Ltd. These plans were prepared on 2023 but design, dimensions, specifications and materials are indicative only and are subject to change without notice at anytime and intending purchasers should undertake their own independent inquiries to satisfy themselves regarding the status of these plans. You should refer to appropriate Survey Plans for confirmation of individual unit areas.



WATERVIEW STATION  
INVESTMENTS PTY. LTD.



Lot 1 Knowles Road, Coolibee,  
Qld, Australia 4650

WATERVIEW  
RETIREMENT VILLAGE

# TYPE A1 BUILDING 3

APARTMENT NUMBER



1 BATH



1 BED



OPEN PLAN



1 CARPARK

UNIT 1 | UNIT 15 | UNIT 34



MASTER BEDROOM	30.45 SQM
BATHROOM	7.25 SQM
LIVING/DINING/KITCHEN	44.80 SQM
VERANDA	22.75 SQM
<b>TOTAL AREA</b>	<b>105.25 SQM</b>



Occurs  
Level 2, 4, 7

Furnishings are for illustrative purposes only and are not included in the unit. This plan is not to scale. Please note that the information contained, in the brochure including the floor plan contained within it, was prepared prior to completion of construction and may be subjected to change without prior notice before the completion of the project. The finished construction may be materially different from the depicted in this brochure. This material and all design is copyright and is the property of Waterview Station Investments Pty. Ltd. This material must not be used, reproduced or copied wholly or in part without prior written permission of Waterview Station Investments Pty. Ltd. These plans were prepared on 2023 but design, dimensions, specifications and materials are indicative only and are subject to change without notice at anytime and intending purchasers should undertake their own independent inquiries to satisfy themselves regarding the status of these plans. You should refer to appropriate Survey Plans for confirmation of individual unit areas.



WATERVIEW STATION  
INVESTMENTS PTY. LTD



Lot 1 Knowles Road, Coolbie,  
Qld, Australia 4850

**WATERVIEW**  
RETIREMENT VILLAGE

# TYPE A2 BUILDING 3

APARTMENT NUMBER



1 BATH



1 BED



OPEN PLAN

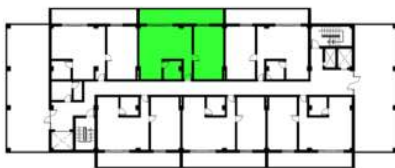


1 CARPARK

UNIT 2 | UNIT 16 | UNIT 35



MASTER BEDROOM	29.20 SQM
BATHROOM	7.00 SQM
LIVING/DINING/KITCHEN	44.00 SQM
VERANDA	22.00 SQM
<b>TOTAL AREA</b>	<b>102.20 SQM</b>



Occurs  
Level 2, 4, 7

Furnishings are for illustrative purposes only and are not included in the unit. This plan is not to scale. Please note that the information contained, in the brochure including the floor plan contained within it, was prepared prior to completion of construction and may be subjected to change without prior notice before the completion of the project. The finished construction may be materially different from the depicted in this brochure. This material and all design is copyright and is the property of Waterview Station Investments Pty. Ltd. This material must not be used, reproduced or copied wholly or in part without prior written permission of Waterview Station Investments Pty. Ltd. These plans were prepared on 2023 but design, dimensions, specifications and materials are indicative only and are subject to change without notice at anytime and intending purchasers should undertake their own independent inquiries to satisfy themselves regarding the status of these plans. You should refer to appropriate Survey Plans for confirmation of individual unit areas.



WATERVIEW STATION  
INVESTMENTS PTY. LTD



Lot 1 Knowles Road, Coolbie,  
Qld, Australia 4850

**WATERVIEW**  
RETIREMENT VILLAGE

# TYPE A3 BUILDING 3

APARTMENT NUMBER



1 BATH



1 BED



OPEN PLAN

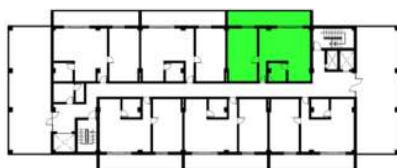


1 CARPARK

UNIT 3 | UNIT 17 | UNIT 36



MASTER BEDROOM	29.20 SQM
BATHROOM	7.00 SQM
LIVING/DINING/KITCHEN	44.00 SQM
VERANDA	22.00 SQM
<b>TOTAL AREA</b>	<b>102.20 SQM</b>



Occurs  
Level 2, 4, 7

Furnishings are for illustrative purposes only and are not included in the unit. This plan is not to scale. Please note that the information contained, in the brochure including the floor plan contained within it, was prepared prior to completion of construction and may be subjected to change without prior notice before the completion of the project. The finished construction may be materially different from the depicted in this brochure. This material and all design is copyright and is the property of Waterview Station Investments Pty. Ltd. This material must not be used, reproduced or copied wholly or in part without prior written permission of Waterview Station Investments Pty. Ltd. These plans were prepared on 2023 but design, dimensions, specifications and materials are indicative only and are subject to change without notice at anytime and intending purchasers should undertake their own independent inquiries to satisfy themselves regarding the status of these plans. You should refer to appropriate Survey Plans for confirmation of individual unit areas.



WATERVIEW STATION  
INVESTMENTS PTY. LTD



Lot 1 Knowles Road, Coolbie,  
Qld, Australia 4850

**WATERVIEW**  
RETIREMENT VILLAGE

# TYPE A4 BUILDING 3

APARTMENT NUMBER



1 BATH



1 BED



OPEN PLAN

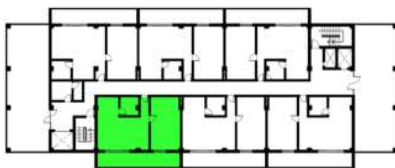


1 CARPARK

UNIT 4 | UNIT 19 | UNIT 38



MASTER BEDROOM	29.20 SQM
BATHROOM	7.00 SQM
LIVING/DINING/KITCHEN	44.00 SQM
VERANDA	22.00 SQM
<b>TOTAL AREA</b>	<b>102.20 SQM</b>



Occurs  
Level 2, 4, 7

Furnishings are for illustrative purposes only and are not included in the unit. This plan is not to scale. Please note that the information contained in the brochure including the floor plan contained within it, was prepared prior to completion of construction and may be subjected to change without prior notice before the completion of the project. The finished construction may be materially different from the depicted in this brochure. This material and all design is copyright and is the property of Waterview Station Investments Pty. Ltd. This material must not be used, reproduced or copied wholly or in part without prior written permission of Waterview Station Investments Pty. Ltd. These plans were prepared on 2023 but design, dimensions, specifications and materials are indicative only and are subject to change without notice at anytime and intending purchasers should undertake their own independent inquiries to satisfy themselves regarding the status of these plans. You should refer to appropriate Survey Plans for confirmation of individual unit areas.



WATERVIEW STATION  
INVESTMENTS PTY. LTD



Lot 1 Knowles Road, Coolbie,  
Qld, Australia 4850

**WATERVIEW**  
RETIREMENT VILLAGE

# TYPE A5 BUILDING 3

APARTMENT NUMBER



1 BATH



1 BED



OPEN PLAN

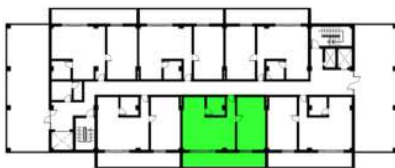


1 CARPARK

UNIT 5 | UNIT 18 | UNIT 37



MASTER BEDROOM	29.20 SQM
BATHROOM	7.00 SQM
LIVING/DINING/KITCHEN	44.00 SQM
VERANDA	22.00 SQM
<hr/>	
TOTAL AREA	102.20 SQM



Occurs  
Level 2, 4, 7

Furnishings are for illustrative purposes only and are not included in the unit. This plan is not to scale. Please note that the information contained, in the brochure including the floor plan contained within it, was prepared prior to completion of construction and may be subjected to change without prior notice before the completion of the project. The finished construction may be materially different from the depicted in this brochure. This material and all design is copyright and is the property of Waterview Station Investments Pty. Ltd. This material must not be used, reproduced or copied wholly or in part without prior written permission of Waterview Station Investments Pty. Ltd. These plans were prepared on 2023 but design, dimensions, specifications and materials are indicative only and are subject to change without notice at anytime and intending purchasers should undertake their own independent inquiries to satisfy themselves regarding the status of these plans. You should refer to appropriate Survey Plans for confirmation of individual unit areas.



WATERVIEW STATION  
INVESTMENTS PTY. LTD



Lot 1 Knowles Road, Coolbie,  
Qld, Australia 4850

**WATERVIEW**  
RETIREMENT VILLAGE

# TYPE A6 BUILDING 3

APARTMENT NUMBER



1 BATH



1 BED



OPEN PLAN

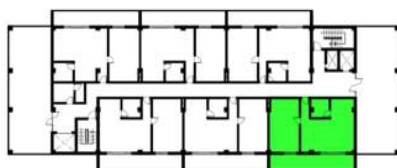


1 CARPARK

## UNIT 6



MASTER BEDROOM	29.20 SQM
BATHROOM	7.00 SQM
LIVING/DINING/KITCHEN	44.80 SQM
VERANDA	22.20 SQM
<b>TOTAL AREA</b>	<b>103.25 SQM</b>



Occurs  
Level 2, 4, 7

Furnishings are for illustrative purposes only and are not included in the unit. This plan is not to scale. Please note that the information contained in the brochure including the floor plan contained within it, was prepared prior to completion of construction and may be subjected to change without prior notice before the completion of the project. The finished construction may be materially different from the depicted in this brochure. This material and all design is copyright and is the property of Waterview Station Investments Pty. Ltd. This material must not be used, reproduced or copied wholly or in part without prior written permission of Waterview Station Investments Pty. Ltd. These plans were prepared on 2023 but design, dimensions, specifications and materials are indicative only and are subject to change without notice at anytime and intending purchasers should undertake their own independent inquiries to satisfy themselves regarding the status of these plans. You should refer to appropriate Survey Plans for confirmation of individual unit areas.



WATERVIEW STATION  
INVESTMENTS PTY. LTD



Lot 1 Knowles Road, Coolbie,  
Qld, Australia 4850

**WATERVIEW**  
RETIREMENT VILLAGE



# TYPE A7 BUILDING 3

APARTMENT NUMBER



1 BATH



1 BED



OPEN PLAN

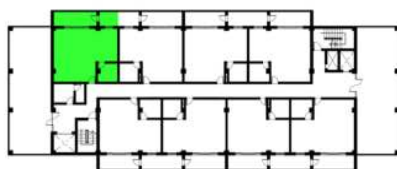


1 CARPARK

UNIT 7 | UNIT 26



BED AREA	11.50 SQM
BATHROOM	7.70 SQM
LIVING/DINING/KITCHEN	43.50 SQM
VERANDA	17.25 SQM
<hr/>	
TOTAL AREA	79.95 SQM



Occurs  
Level 3 & 6

Furnishings are for illustrative purposes only and are not included in the unit. This plan is not to scale. Please note that the information contained, in the brochure including the floor plan contained within it, was prepared prior to completion of construction and may be subjected to change without prior notice before the completion of the project. The finished construction may be materially different from the depicted in this brochure. This material and all design is copyright and is the property of Waterview Station Investments Pty. Ltd. This material must not be used, reproduced or copied wholly or in part without prior written permission of Waterview Station Investments Pty. Ltd. These plans were prepared on 2023 but design, dimensions, specifications and materials are indicative only and are subject to change without notice at anytime and intending purchasers should undertake their own independent inquiries to satisfy themselves regarding the status of these plans. You should refer to appropriate Survey Plans for confirmation of individual unit areas.



WATERVIEW STATION  
INVESTMENTS PTY. LTD



Lot 1 Knowles Road, Coolbie,  
Qld, Australia 4850

**WATERVIEW**  
RETIREMENT VILLAGE

# TYPE A8 BUILDING 3

APARTMENT NUMBER



1 BATH



1 BED



OPEN PLAN

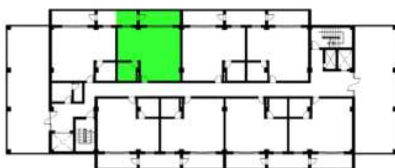


1 CARPARK

UNIT 8 | UNIT 27



BED AREA	10.50 SQM
BATHROOM	7.70 SQM
LIVING/DINING/KITCHEN	41.60 SQM
VERANDA	16.50 SQM
<hr/>	
TOTAL AREA	76.30 SQM



Occurs  
Level 3 & 6

Furnishings are for illustrative purposes only and are not included in the unit. This plan is not to scale. Please note that the information contained, in the brochure including the floor plan contained within it, was prepared prior to completion of construction and may be subjected to change without prior notice before the completion of the project. The finished construction may be materially different from the depicted in this brochure. This material and all design is copyright and is the property of Waterview Station Investments Pty. Ltd. This material must not be used, reproduced or copied wholly or in part without prior written permission of Waterview Station Investments Pty. Ltd. These plans were prepared on 2023 but design, dimensions, specifications and materials are indicative only and are subject to change without notice at anytime and intending purchasers should undertake their own independent inquiries to satisfy themselves regarding the status of these plans. You should refer to appropriate Survey Plans for confirmation of individual unit areas.



WATERVIEW STATION  
INVESTMENTS PTY. LTD



Lot 1 Knowles Road, Coolbie,  
Qld, Australia 4850

WATERVIEW  
RETIREMENT VILLAGE

# TYPE A9 BUILDING 3

APARTMENT NUMBER



1 BATH



1 BED



OPEN PLAN

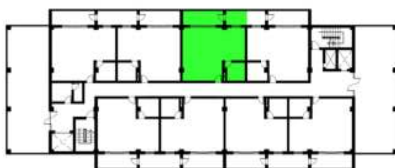


1 CARPARK

UNIT 9 | UNIT 28



BED AREA	10.50 SQM
BATHROOM	7.70 SQM
LIVING/DINING/KITCHEN	41.60 SQM
VERANDA	16.50 SQM
<hr/>	
TOTAL AREA	76.30 SQM



Occurs  
Level 3 & 6

Furnishings are for illustrative purposes only and are not included in the unit. This plan is not to scale. Please note that the information contained, in the brochure including the floor plan contained within it, was prepared prior to completion of construction and may be subjected to change without prior notice before the completion of the project. The finished construction may be materially different from the depicted in this brochure. This material and all design is copyright and is the property of Waterview Station Investments Pty. Ltd. This material must not be used, reproduced or copied wholly or in part without prior written permission of Waterview Station Investments Pty. Ltd. These plans were prepared on 2023 but design, dimensions, specifications and materials are indicative only and are subject to change without notice at anytime and intending purchasers should undertake their own independent inquiries to satisfy themselves regarding the status of these plans. You should refer to appropriate Survey Plans for confirmation of individual unit areas.



WATERVIEW STATION  
INVESTMENTS PTY. LTD



Lot 1 Knowles Road, Coolbie,  
Qld, Australia 4850

**WATERVIEW**  
RETIREMENT VILLAGE

# TYPE A10 BUILDING 3

APARTMENT NUMBER



1 BATH



1 BED



OPEN PLAN

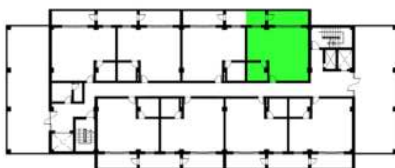


1 CARPARK

UNIT 10 | UNIT 29



BED AREA	10.50 SQM
BATHROOM	7.70 SQM
LIVING/DINING/KITCHEN	41.60 SQM
VERANDA	16.50 SQM
<hr/>	
TOTAL AREA	76.30 SQM



Occurs  
Level 3 & 6

Furnishings are for illustrative purposes only and are not included in the unit. This plan is not to scale. Please note that the information contained in the brochure including the floor plan contained within it, was prepared prior to completion of construction and may be subjected to change without prior notice before the completion of the project. The finished construction may be materially different from the depicted in this brochure. This material and all design is copyright and is the property of Waterview Station Investments Pty. Ltd. This material must not be used, reproduced or copied wholly or in part without prior written permission of Waterview Station Investments Pty. Ltd. These plans were prepared on 2023 but design, dimensions, specifications and materials are indicative only and are subject to change without notice at anytime and intending purchasers should undertake their own independent inquiries to satisfy themselves regarding the status of these plans. You should refer to appropriate Survey Plans for confirmation of individual unit areas.



WATERVIEW STATION  
INVESTMENTS PTY. LTD



Lot 1 Knowles Road, Coolbie,  
Qld, Australia 4850

WATERVIEW  
RETIREMENT VILLAGE

# TYPE A11 BUILDING 3

APARTMENT NUMBER



1 BATH



1 BED



OPEN PLAN

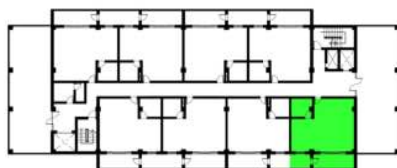


1 CARPARK

UNIT 11 | UNIT 30



BED AREA	11.50 SQM
BATHROOM	7.70 SQM
LIVING/DINING/KITCHEN	41.50 SQM
VERANDA	16.75 SQM
<hr/>	
TOTAL AREA	77.45 SQM



Occurs  
Level 3 & 6

Furnishings are for illustrative purposes only and are not included in the unit. This plan is not to scale. Please note that the information contained, in the brochure including the floor plan contained within it, was prepared prior to completion of construction and may be subjected to change without prior notice before the completion of the project. The finished construction may be materially different from the depicted in this brochure. This material and all design is copyright and is the property of Waterview Station Investments Pty. Ltd. This material must not be used, reproduced or copied wholly or in part without prior written permission of Waterview Station Investments Pty. Ltd. These plans were prepared on 2023 but design, dimensions, specifications and materials are indicative only and are subject to change without notice at anytime and intending purchasers should undertake their own independent inquiries to satisfy themselves regarding the status of these plans. You should refer to appropriate Survey Plans for confirmation of individual unit areas.



WATERVIEW STATION  
INVESTMENTS PTY. LTD



Lot 1 Knowles Road, Coolbie,  
Qld, Australia 4850

**WATERVIEW**  
RETIREMENT VILLAGE

# TYPE A12 BUILDING 3

APARTMENT NUMBER



1 BATH



1 BED



OPEN PLAN

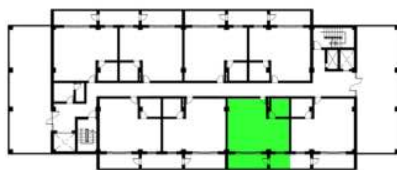


1 CARPARK

UNIT 12 | UNIT 31



BED AREA	10.50 SQM
BATHROOM	7.70 SQM
LIVING/DINING/KITCHEN	41.60 SQM
VERANDA	16.50 SQM
<hr/>	
TOTAL AREA	76.30 SQM



Occurs  
Level 3 & 6

Furnishings are for illustrative purposes only and are not included in the unit. This plan is not to scale. Please note that the information contained, in the brochure including the floor plan contained within it, was prepared prior to completion of construction and may be subjected to change without prior notice before the completion of the project. The finished construction may be materially different from the depicted in this brochure. This material and all design is copyright and is the property of Waterview Station Investments Pty. Ltd. This material must not be used, reproduced or copied wholly or in part without prior written permission of Waterview Station Investments Pty. Ltd. These plans were prepared on 2023 but design, dimensions, specifications and materials are indicative only and are subject to change without notice at anytime and intending purchasers should undertake their own independent inquiries to satisfy themselves regarding the status of these plans. You should refer to appropriate Survey Plans for confirmation of individual unit areas.



WATERVIEW STATION  
INVESTMENTS PTY. LTD



Lot 1 Knowles Road, Coolbie,  
Qld, Australia 4850

WATERVIEW  
RETIREMENT VILLAGE

# TYPE A13 BUILDING 3

APARTMENT NUMBER



1 BATH



1 BED



OPEN PLAN

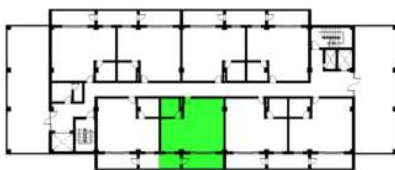


1 CARPARK

UNIT 13 | UNIT 32



BED AREA	10.50 SQM
BATHROOM	7.70 SQM
LIVING/DINING/KITCHEN	41.60 SQM
VERANDA	16.50 SQM
<b>TOTAL AREA</b>	<b>76.30 SQM</b>



Occurs  
Level 3 & 6

Furnishings are for illustrative purposes only and are not included in the unit. This plan is not to scale. Please note that the information contained in the brochure including the floor plan contained within it, was prepared prior to completion of construction and may be subjected to change without prior notice before the completion of the project. The finished construction may be materially different from the depicted in this brochure. This material and all design is copyright and is the property of Waterview Station Investments Pty. Ltd. This material must not be used, reproduced or copied wholly or in part without prior written permission of Waterview Station Investments Pty. Ltd. These plans were prepared on 2023 but design, dimensions, specifications and materials are indicative only and are subject to change without notice at anytime and intending purchasers should undertake their own independent inquiries to satisfy themselves regarding the status of these plans. You should refer to appropriate Survey Plans for confirmation of individual unit areas.



WATERVIEW STATION  
INVESTMENTS PTY. LTD



Lot 1 Knowles Road, Coolbie,  
Qld, Australia 4850

**WATERVIEW**  
RETIREMENT VILLAGE

# TYPE A14 BUILDING 3

APARTMENT NUMBER



1 BATH



1 BED



OPEN PLAN

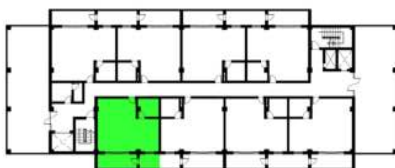


1 CARPARK

UNIT 14 | UNIT 33



BED AREA	10.50 SQM
BATHROOM	7.70 SQM
LIVING/DINING/KITCHEN	41.60 SQM
VERANDA	16.50 SQM
<hr/>	
TOTAL AREA	76.30 SQM



Occurs  
Level 3 & 6

Furnishings are for illustrative purposes only and are not included in the unit. This plan is not to scale. Please note that the information contained, in the brochure including the floor plan contained within it, was prepared prior to completion of construction and may be subjected to change without prior notice before the completion of the project. The finished construction may be materially different from the depicted in this brochure. This material and all design is copyright and is the property of Waterview Station Investments Pty. Ltd. This material must not be used, reproduced or copied wholly or in part without prior written permission of Waterview Station Investments Pty. Ltd. These plans were prepared on 2023 but design, dimensions, specifications and materials are indicative only and are subject to change without notice at anytime and intending purchasers should undertake their own independent inquiries to satisfy themselves regarding the status of these plans. You should refer to appropriate Survey Plans for confirmation of individual unit areas.



WATERVIEW STATION  
INVESTMENTS PTY. LTD



Lot 1 Knowles Road, Coolbie,  
Qld, Australia 4850

WATERVIEW  
RETIREMENT VILLAGE



# TYPE A15 BUILDING 3

APARTMENT NUMBER



1 BATH



2 BED



OPEN PLAN



1 CARPARK

UNIT 20 | UNIT 39



BEDROOM 1	17.00 SQM
BEDROOM 2	13.50 SQM
BATHROOM	7.00 SQM
LIVING/DINING/KITCHEN	44.80 SQM
VERANDA	22.75 SQM
<b>TOTAL AREA</b>	<b>105.00 SQM</b>



Occurs  
Level 5 & 8

Furnishings are for illustrative purposes only and are not included in the unit. This plan is not to scale. Please note that the information contained, in the brochure including the floor plan contained within it, was prepared prior to completion of construction and may be subjected to change without prior notice before the completion of the project. The finished construction may be materially different from the depicted in this brochure. This material and all design is copyright and is the property of Waterview Station Investments Pty. Ltd. This material must not be used, reproduced or copied wholly or in part without prior written permission of Waterview Station Investments Pty. Ltd. These plans were prepared on 2023 but design, dimensions, specifications and materials are indicative only and are subject to change without notice at anytime and intending purchasers should undertake their own independent inquiries to satisfy themselves regarding the status of these plans. You should refer to appropriate Survey Plans for confirmation of individual unit areas.



WATERVIEW STATION  
INVESTMENTS PTY. LTD



Lot 1 Knowles Road, Coolbie,  
Qld, Australia 4850

**WATERVIEW**  
RETIREMENT VILLAGE

# TYPE A16 BUILDING 3

APARTMENT NUMBER



1 BATH



2 BED



OPEN PLAN

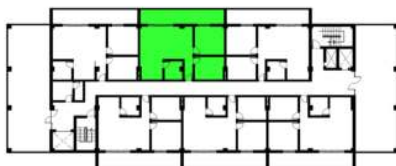


1 CARPARK

UNIT 21 | UNIT 40



BEDROOM 1	16.35 SQM
BEDROOM 2	13.00 SQM
BATHROOM	7.00 SQM
LIVING/DINING/KITCHEN	44.00 SQM
VERANDA	22.00 SQM
<b>TOTAL AREA</b>	<b>102.35 SQM</b>



Occurs  
Level 5 & 8

Furnishings are for illustrative purposes only and are not included in the unit. This plan is not to scale. Please note that the information contained, in the brochure including the floor plan contained within it, was prepared prior to completion of construction and may be subjected to change without prior notice before the completion of the project. The finished construction may be materially different from the depicted in this brochure. This material and all design is copyright and is the property of Waterview Station Investments Pty. Ltd. This material must not be used, reproduced or copied wholly or in part without prior written permission of Waterview Station Investments Pty. Ltd. These plans were prepared on 2023 but design, dimensions, specifications and materials are indicative only and are subject to change without notice at anytime and intending purchasers should undertake their own independent inquiries to satisfy themselves regarding the status of these plans. You should refer to appropriate Survey Plans for confirmation of individual unit areas.



WATERVIEW STATION  
INVESTMENTS PTY. LTD



Lot 1 Knowles Road, Coolbie,  
Qld, Australia 4850

**WATERVIEW**  
RETIREMENT VILLAGE

# TYPE A17 BUILDING 3

APARTMENT NUMBER



1 BATH



2 BED



OPEN PLAN



1 CARPARK

UNIT 22 | UNIT 41



BEDROOM 1	16.35 SQM
BEDROOM 2	13.00 SQM
BATHROOM	7.00 SQM
LIVING/DINING/KITCHEN	44.00 SQM
VERANDA	22.00 SQM
TOTAL AREA	102.35 SQM



Occurs  
Level 5 & 8

Furnishings are for illustrative purposes only and are not included in the unit. This plan is not to scale. Please note that the information contained, in the brochure including the floor plan contained within it, was prepared prior to completion of construction and may be subjected to change without prior notice before the completion of the project. The finished construction may be materially different from the depicted in this brochure. This material and all design is copyright and is the property of Waterview Station Investments Pty. Ltd. This material must not be used, reproduced or copied wholly or in part without prior written permission of Waterview Station Investments Pty. Ltd. These plans were prepared on 2023 but design, dimensions, specifications and materials are indicative only and are subject to change without notice at anytime and intending purchasers should undertake their own independent inquiries to satisfy themselves regarding the status of these plans. You should refer to appropriate Survey Plans for confirmation of individual unit areas.



WATERVIEW STATION  
INVESTMENTS PTY. LTD



Lot 1 Knowles Road, Coolbie,  
Qld, Australia 4850

WATERVIEW  
RETIREMENT VILLAGE

# TYPE A18 BUILDING 3

APARTMENT NUMBER



1 BATH



2 BED



OPEN PLAN

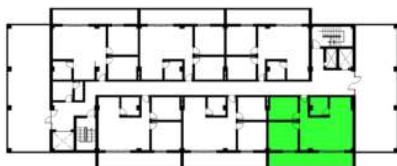


1 CARPARK

UNIT 23 | UNIT 42



BEDROOM 1	16.35 SQM
BEDROOM 2	13.00 SQM
BATHROOM	7.00 SQM
LIVING/DINING/KITCHEN	44.75 SQM
VERANDA	22.25 SQM
<b>TOTAL AREA</b>	<b>103.35 SQM</b>



Occurs  
Level 5 & 8

Furnishings are for illustrative purposes only and are not included in the unit. This plan is not to scale. Please note that the information contained, in the brochure including the floor plan contained within it, was prepared prior to completion of construction and may be subjected to change without prior notice before the completion of the project. The finished construction may be materially different from the depicted in this brochure. This material and all design is copyright and is the property of Waterview Station Investments Pty. Ltd. This material must not be used, reproduced or copied wholly or in part without prior written permission of Waterview Station Investments Pty. Ltd. These plans were prepared on 2023 but design, dimensions, specifications and materials are indicative only and are subject to change without notice at anytime and intending purchasers should undertake their own independent inquiries to satisfy themselves regarding the status of these plans. You should refer to appropriate Survey Plans for confirmation of individual unit areas.



WATERVIEW STATION  
INVESTMENTS PTY. LTD



Lot 1 Knowles Road, Coolbie,  
Qld, Australia 4850

WATERVIEW  
RETIREMENT VILLAGE

# TYPE A19 BUILDING 3

APARTMENT NUMBER



1 BATH



2 BED



OPEN PLAN

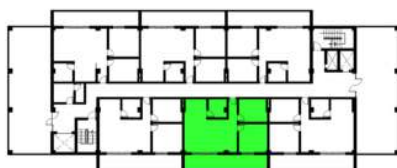


1 CARPARK

UNIT 24 | UNIT 43



BEDROOM 1	16.35 SQM
BEDROOM 2	13.00 SQM
BATHROOM	7.00 SQM
LIVING/DINING/KITCHEN	44.00 SQM
VERANDA	22.00 SQM
<b>TOTAL AREA</b>	<b>102.35 SQM</b>



Occurs  
Level 5 & 8

Furnishings are for illustrative purposes only and are not included in the unit. This plan is not to scale. Please note that the information contained, in the brochure including the floor plan contained within it, was prepared prior to completion of construction and may be subjected to change without prior notice before the completion of the project. The finished construction may be materially different from the depicted in this brochure. This material and all design is copyright and is the property of Waterview Station Investments Pty. Ltd. This material must not be used, reproduced or copied wholly or in part without prior written permission of Waterview Station Investments Pty. Ltd. These plans were prepared on 2023 but design, dimensions, specifications and materials are indicative only and are subject to change without notice at anytime and intending purchasers should undertake their own independent inquiries to satisfy themselves regarding the status of these plans. You should refer to appropriate Survey Plans for confirmation of individual unit areas.



WATERVIEW STATION  
INVESTMENTS PTY. LTD



Lot 1 Knowles Road, Coolbie,  
Qld, Australia 4850

**WATERVIEW**  
RETIREMENT VILLAGE

# TYPE A20 BUILDING 3

APARTMENT NUMBER



1 BATH



2 BED



OPEN PLAN

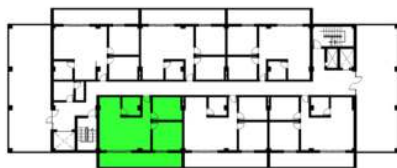


1 CARPARK

UNIT 25 | UNIT 44



BEDROOM 1	16.35 SQM
BEDROOM 2	13.00 SQM
BATHROOM	7.00 SQM
LIVING/DINING/KITCHEN	44.00 SQM
VERANDA	22.00 SQM
<b>TOTAL AREA</b>	<b>102.35 SQM</b>



Occurs  
Level 5 & 8

Furnishings are for illustrative purposes only and are not included in the unit. This plan is not to scale. Please note that the information contained, in the brochure including the floor plan contained within it, was prepared prior to completion of construction and may be subjected to change without prior notice before the completion of the project. The finished construction may be materially different from the depicted in this brochure. This material and all design is copyright and is the property of Waterview Station Investments Pty. Ltd. This material must not be used, reproduced or copied wholly or in part without prior written permission of Waterview Station Investments Pty. Ltd. These plans were prepared on 2023 but design, dimensions, specifications and materials are indicative only and are subject to change without notice at anytime and intending purchasers should undertake their own independent inquiries to satisfy themselves regarding the status of these plans. You should refer to appropriate Survey Plans for confirmation of individual unit areas.



WATERVIEW STATION  
INVESTMENTS PTY. LTD



Lot 1 Knowles Road, Coolbie,  
Qld, Australia 4850

**WATERVIEW**  
RETIREMENT VILLAGE

# TYPE A21 BUILDING 3

APARTMENT NUMBER



2 BATH



2 BED



OPEN PLAN



1 CARPARK

UNIT 45 | UNIT 48 | UNIT 51 | UNIT 54



BEDROOM 1	29.75 SQM
ENSUITE T&B	16.15 SQM
BEDROOM 2	7.65 SQM
BATHROOM	6.35 SQM
LIVING/DINING/KITCHEN	80.50 SQM
VERANDA	22.00 SQM
<b>TOTAL AREA</b>	<b>162.40 SQM</b>



Occurs  
Level 9 &10  
11 &12

Furnishings are for illustrative purposes only and are not included in the unit. This plan is not to scale. Please note that the information contained, in the brochure including the floor plan contained within it, was prepared prior to completion of construction and may be subjected to change without prior notice before the completion of the project. The finished construction may be materially different from the depicted in this brochure. This material and all design is copyright and is the property of Waterview Station Investments Pty. Ltd. This material must not be used, reproduced or copied wholly or in part without prior written permission of Waterview Station Investments Pty. Ltd. These plans were prepared on 2023 but design, dimensions, specifications and materials are indicative only and are subject to change without notice at anytime and intending purchasers should undertake their own independent inquiries to satisfy themselves regarding the status of these plans. You should refer to appropriate Survey Plans for confirmation of individual unit areas.



WATERVIEW STATION  
INVESTMENTS PTY. LTD



Lot 1 Knowles Road, Coolbie,  
Qld, Australia 4850

**WATERVIEW**  
RETIREMENT VILLAGE

# TYPE A22 BUILDING 3

APARTMENT NUMBER



2 BATH



2 BED



OPEN PLAN

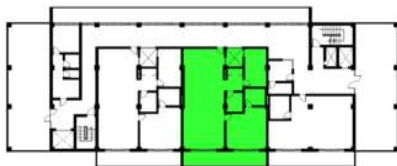


1 CARPARK

UNIT 46 | UNIT 49 | UNIT 52 | UNIT 55



BEDROOM 1	29.75 SQM
ENSUITE T&B	16.15 SQM
BEDROOM 2	7.65 SQM
BATHROOM	6.35 SQM
LIVING/DINING/KITCHEN	80.50 SQM
VERANDA	22.00 SQM
<b>TOTAL AREA</b>	<b>162.40 SQM</b>



Occurs  
Level 9 & 10  
11 & 12

Furnishings are for illustrative purposes only and are not included in the unit. This plan is not to scale. Please note that the information contained, in the brochure including the floor plan contained within it, was prepared prior to completion of construction and may be subjected to change without prior notice before the completion of the project. The finished construction may be materially different from the depicted in this brochure. This material and all design is copyright and is the property of Waterview Station Investments Pty. Ltd. This material must not be used, reproduced or copied wholly or in part without prior written permission of Waterview Station Investments Pty. Ltd. These plans were prepared on 2023 but design, dimensions, specifications and materials are indicative only and are subject to change without notice at anytime and intending purchasers should undertake their own independent inquiries to satisfy themselves regarding the status of these plans. You should refer to appropriate Survey Plans for confirmation of individual unit areas.



WATERVIEW STATION  
INVESTMENTS PTY. LTD



Lot 1 Knowles Road, Coolbie,  
Qld, Australia 4850

**WATERVIEW**  
RETIREMENT VILLAGE



# TYPE A23 BUILDING 3

APARTMENT NUMBER



1 BATH



1 BED



OPEN PLAN

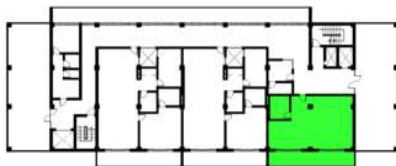


1 CARPARK

UNIT 47 | UNIT 50 | UNIT 53 | UNIT 56



BED AREA	14.00 SQM
BATHROOM	9.50 SQM
LIVING/DINING/KITCHEN	57.50 SQM
VERANDA	22.50 SQM
TOTAL AREA	103.50 SQM



Occurs  
Level 9 & 10  
11 & 12

Furnishings are for illustrative purposes only and are not included in the unit. This plan is not to scale. Please note that the information contained, in the brochure including the floor plan contained within it, was prepared prior to completion of construction and may be subjected to change without prior notice before the completion of the project. The finished construction may be materially different from the depicted in this brochure. This material and all design is copyright and is the property of Waterview Station Investments Pty. Ltd. This material must not be used, reproduced or copied wholly or in part without prior written permission of Waterview Station Investments Pty. Ltd. These plans were prepared on 2023 but design, dimensions, specifications and materials are indicative only and are subject to change without notice at anytime and intending purchasers should undertake their own independent inquiries to satisfy themselves regarding the status of these plans. You should refer to appropriate Survey Plans for confirmation of individual unit areas.



WATERVIEW STATION  
INVESTMENTS PTY. LTD



Lot 1 Knowles Road, Coolbie,  
Qld, Australia 4850

WATERVIEW  
RETIREMENT VILLAGE

# TYPE A24 BUILDING 3

APARTMENT NUMBER



2 BATH



2 BED



OPEN PLAN

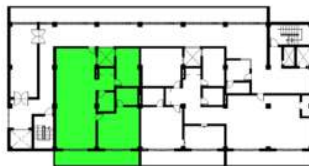


1 CARPARK

UNIT 57 | UNIT 59 | UNIT 61



BEDROOM 1	29.75 SQM
ENSUITE T&B	16.15 SQM
BEDROOM 2	7.65 SQM
BATHROOM	6.35 SQM
LIVING/DINING/KITCHEN	80.50 SQM
VERANDA	22.00 SQM
<b>TOTAL AREA</b>	<b>162.40 SQM</b>



Occurs  
Level 13, 14, & 15

Furnishings are for illustrative purposes only and are not included in the unit. This plan is not to scale. Please note that the information contained in the brochure including the floor plan contained within it, was prepared prior to completion of construction and may be subjected to change without prior notice before the completion of the project. The finished construction may be materially different from the depicted in this brochure. This material and all design is copyright and is the property of Waterview Station Investments Pty. Ltd. This material must not be used, reproduced or copied wholly or in part without prior written permission of Waterview Station Investments Pty. Ltd. These plans were prepared on 2023 but design, dimensions, specifications and materials are indicative only and are subject to change without notice at anytime and intending purchasers should undertake their own independent inquiries to satisfy themselves regarding the status of these plans. You should refer to appropriate Survey Plans for confirmation of individual unit areas.



WATERVIEW STATION  
INVESTMENTS PTY. LTD



Lot 1 Knowles Road, Coolbie,  
Qld, Australia 4850

**WATERVIEW**  
RETIREMENT VILLAGE

# TYPE A25 BUILDING 3

APARTMENT NUMBER



2 BATH



3 BED



OPEN PLAN

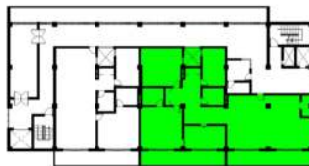


1 CARPARK

UNIT 58 | UNIT 60 | UNIT 62



MASTER BEDROOM	31.65 SQM
ENSUITE T&B	7.65 SQM
BEDROOM 1	27.75 SQM
BEDROOM 2	16.15 SQM
COMMON T&B	7.65 SQM
STUDY ROOM	18.30 SQM
LIVING/DINING/KITCHEN	111.90 SQM
VERANDA	44.50 SQM
<b>TOTAL AREA</b>	<b>265.55 SQM</b>



Occurs  
Level 13, 14, & 15

Furnishings are for illustrative purposes only and are not included in the unit. This plan is not to scale. Please note that the information contained, in the brochure including the floor plan contained within it, was prepared prior to completion of construction and may be subjected to change without prior notice before the completion of the project. The finished construction may be materially different from the depicted in this brochure. This material and all design is copyright and is the property of Waterview Station Investments Pty. Ltd. This material must not be used, reproduced or copied wholly or in part without prior written permission of Waterview Station Investments Pty. Ltd. These plans were prepared on 2023 but design, dimensions, specifications and materials are indicative only and are subject to change without notice at anytime and intending purchasers should undertake their own independent inquiries to satisfy themselves regarding the status of these plans. You should refer to appropriate Survey Plans for confirmation of individual unit areas.



WATERVIEW STATION  
INVESTMENTS PTY. LTD



Lot 1 Knowles Road, Coolbie,  
Qld, Australia 4850

**WATERVIEW**  
RETIREMENT VILLAGE